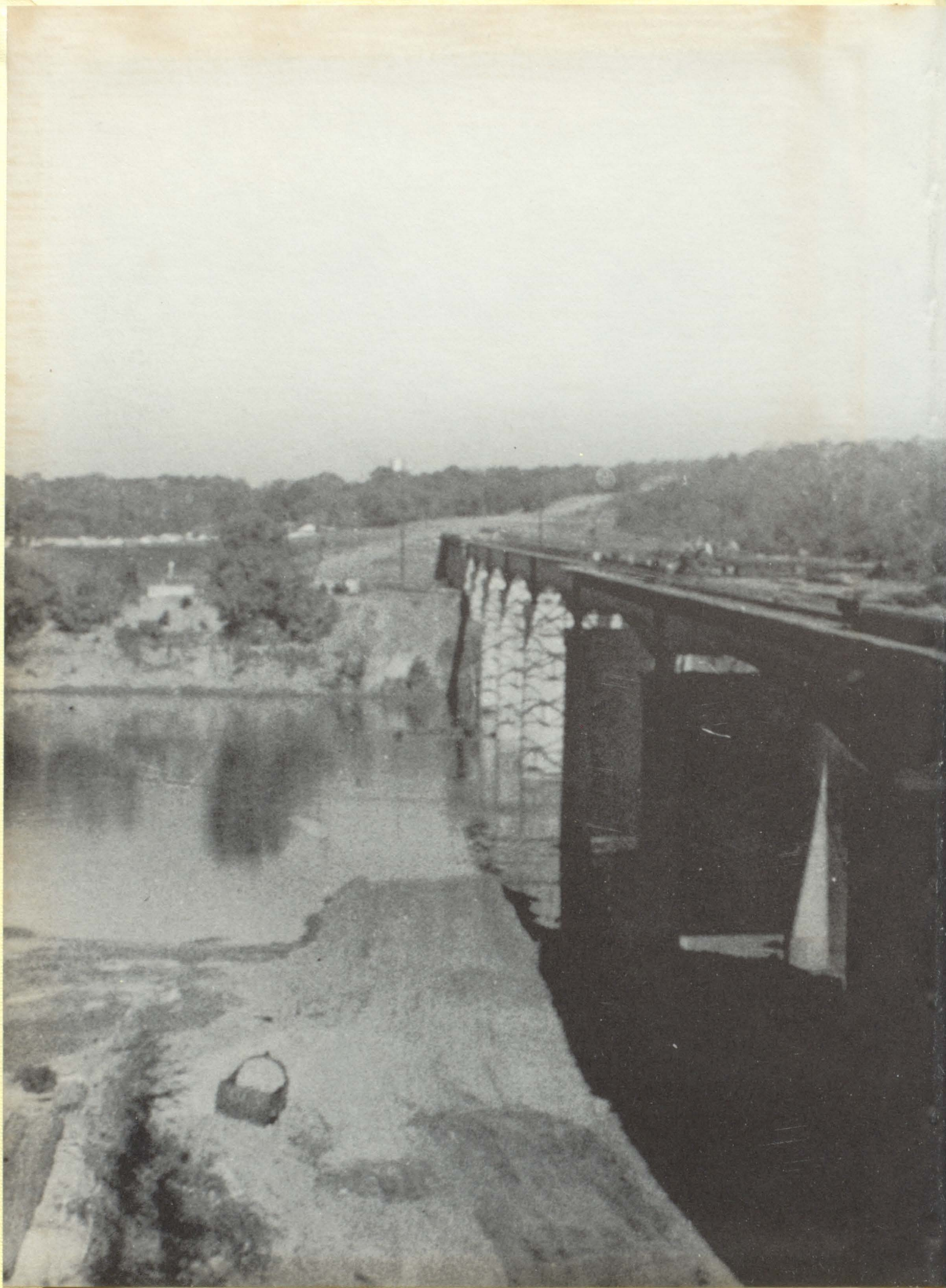
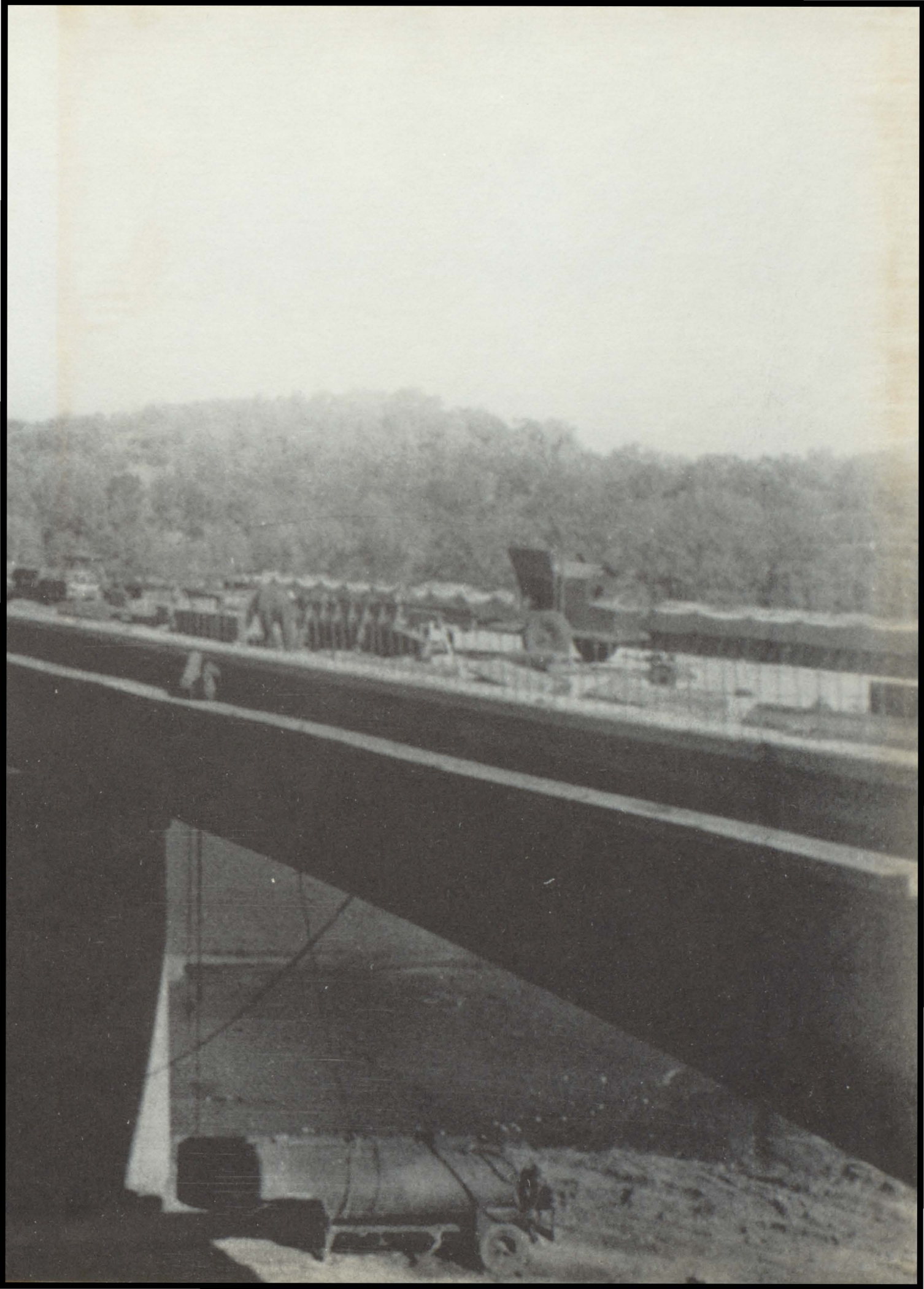
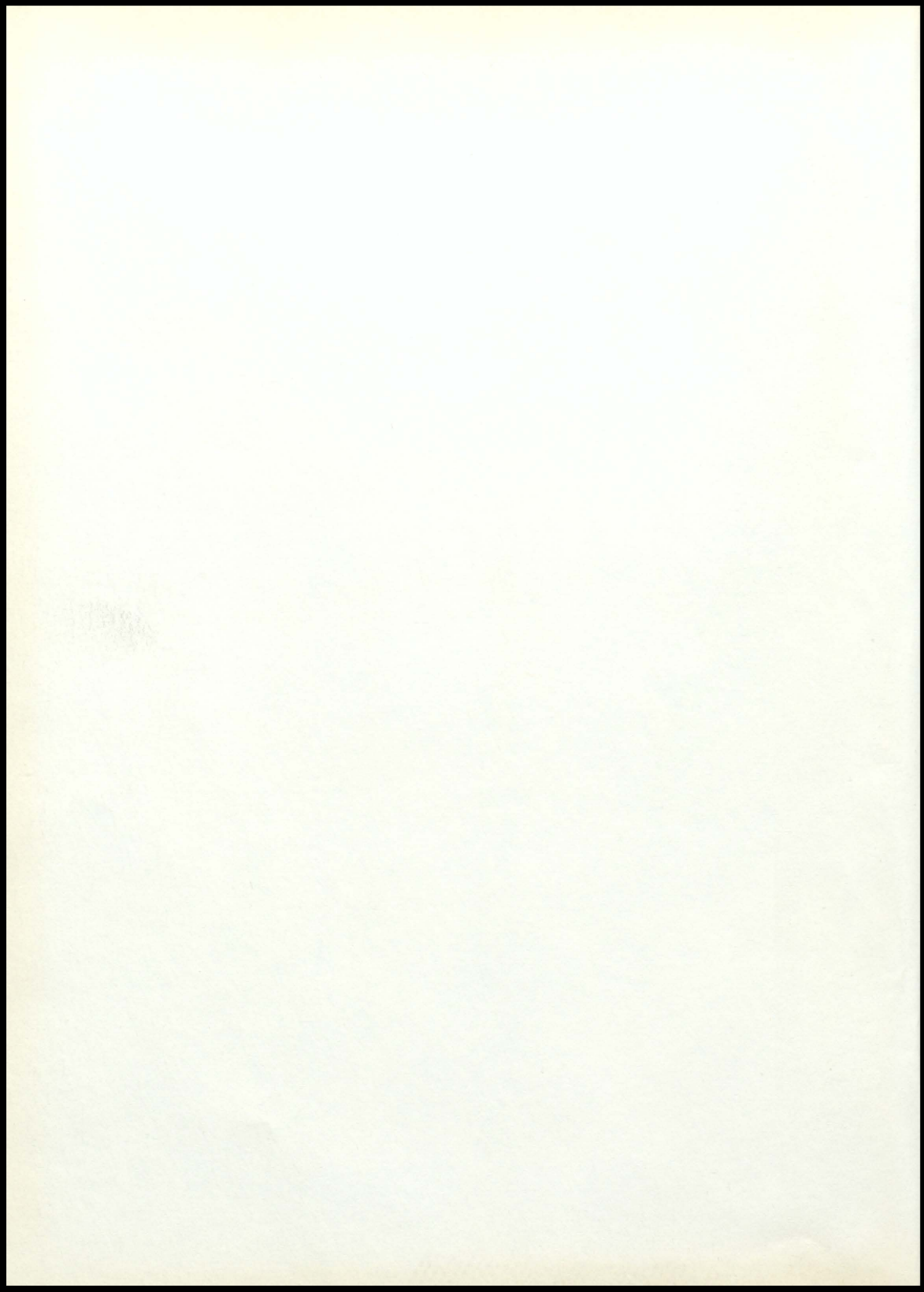


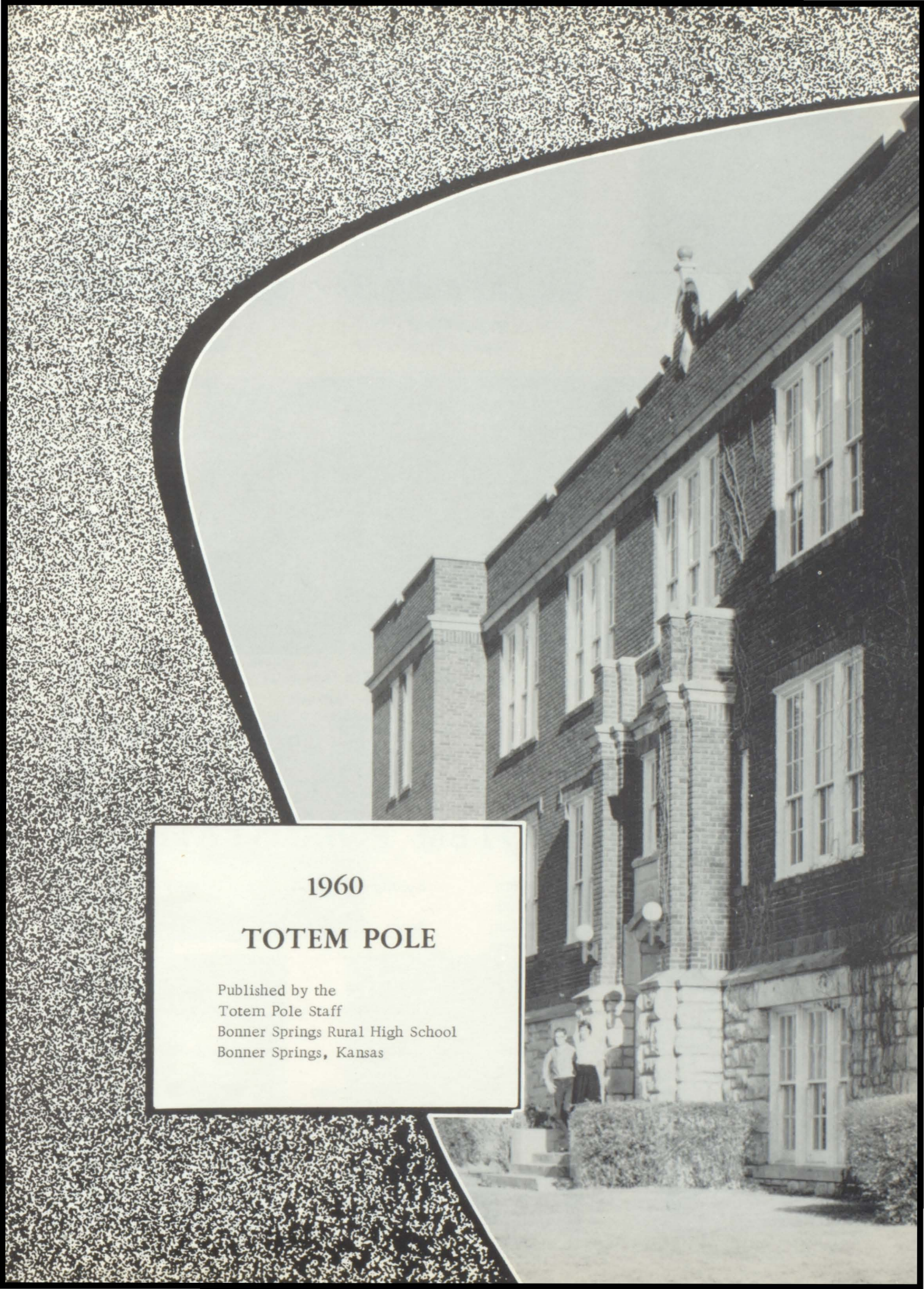
THE 1990

TOTEM POLE









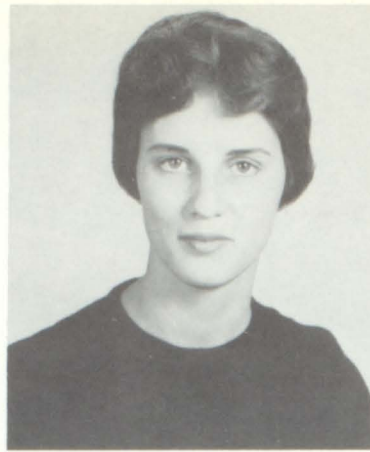
1960

## TOTEM POLE

Published by the  
Totem Pole Staff  
Bonner Springs Rural High School  
Bonner Springs, Kansas



Susan Saunders  
Editor



Darline Mize  
Associate Editor



Bill Sedgwick  
Business Manager



Lysle Middaugh  
Advisor



Bob Venturella  
Advisor

## THE 1960 TOTEM POLE STAFF

Editor . . . . . Susan Saunders  
 Associate Editor . . . . . Darline Mize  
 Business Manager . . . . . Bill Sedgwick  
 Business Staff . . . . . Lloyd Berrey  
    Barbara Scott  
    Dennis Powell  
 Photography . . . . . Mike Metzler  
    Rudy Kellner  
 Typists . . . . . Gerry Schofield  
    Carol Wendt  
 Features Editor . . . . . Karen Keen  
 Features Staff . . . . . Glenn Price

Faculty . . . . . Sally Wilkerson  
    Charles Hale  
 Sports . . . . . Harrell Dotson  
    Mike Woolf  
 Classes . . . . . Mary Ann Meade  
    Sharon Lawrence  
 Organizations . . . . . Barbara Wright  
    George Pollock  
 Seniors . . . . . Torie Travis  
    Pat Jennings  
 Faculty Advisor . . . . Mrs. Lysle Middaugh  
 Faculty Advisor . . . . Mr. Robert Venturella



Mike Metzler and Rudy Kellner



Gerrie Schofield, Carol Wendt, and Mrs. Middaugh.



Karen Keen and Glenn Price.



Barbara Wright

Sally Wilkerson, Charles Hale, and Mr. Venturella.

Lloyd Berrey, Mr. Venturella, Bill Sedgwick, Barbara Scott, and Dennis Powell.



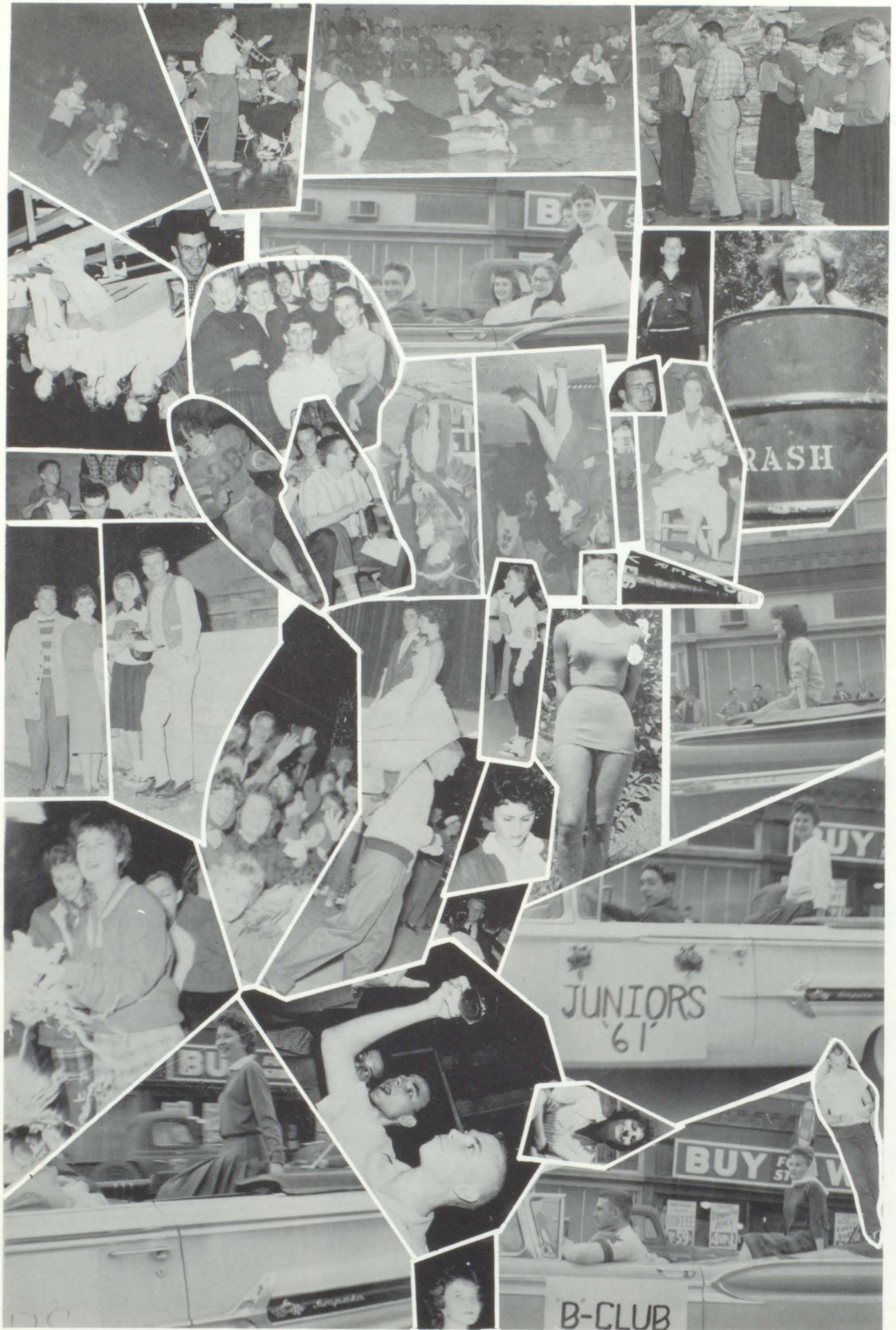
Harrell Dotson and Mike Woolf

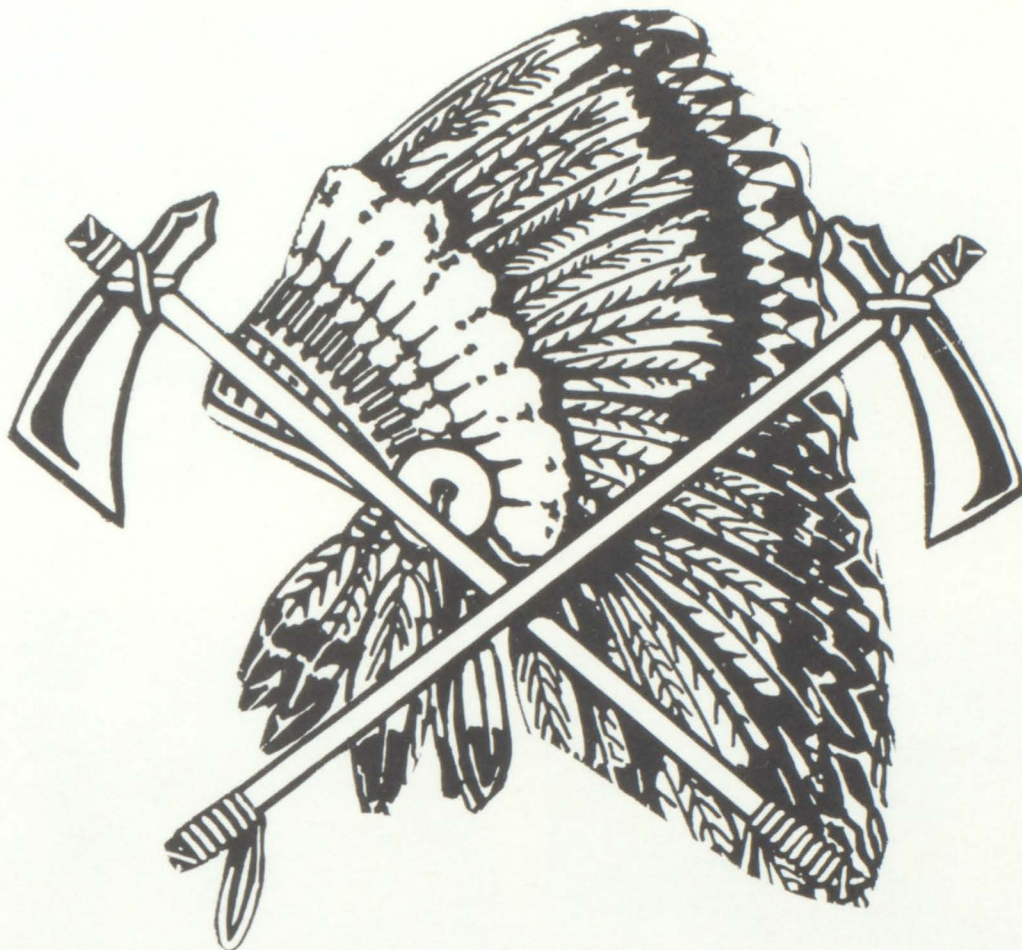


Mary Ann Meade and Sharon Lawrence



Pat Jennings and Torie Travis





## TABLE OF CONTENTS

- I. DEDICATION
- II. ADMINISTRATION
- III. SENIORS
- IV. UNDERCLASSMEN
- V. DEPARTMENTS
- VI. ATHLETICS
- VII. ORGANIZATIONS
- VIII. FEATURES



MR. MIZE

## DEDICATION

The 1960 Totem Pole staff wishes to dedicate this annual to Mr. Paul Mize who has taught in the Bonner Springs High School for forty-one years. He has served not only as teacher and administrator, but also as friend, counselor, and confidant to thousands of students. May this book express the love and respect of the graduates of the last four decades as well as of the class of 1960.



"Absent again, huh?"



Mrs. Mize--Mr. Mize's favorite gal.



"So, you still don't understand!"



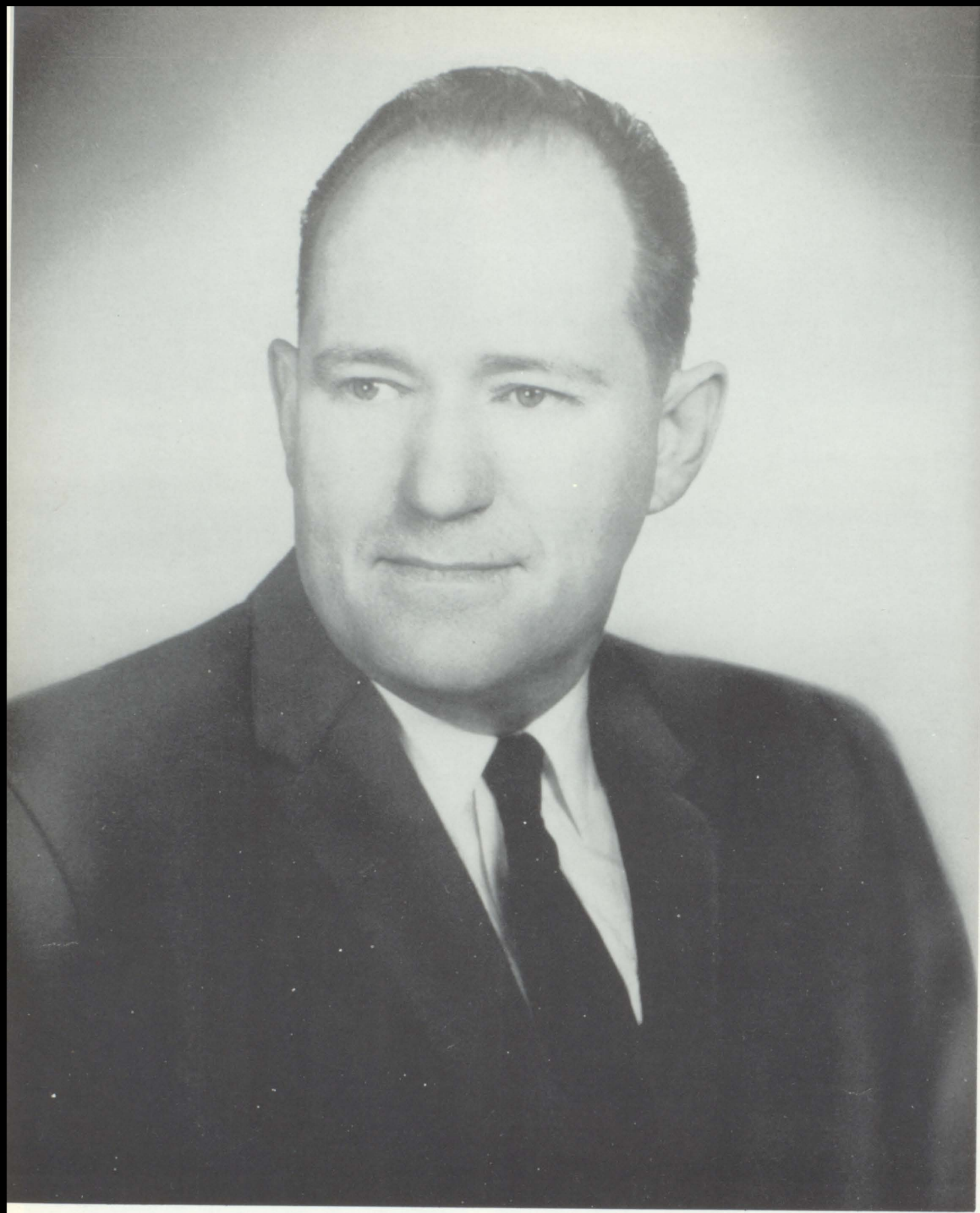
The happy couple--Mr. and Mrs. Mize.



"Twenty five people absent?"



"My that's a roaring fire!"



**MR. VAN PETTEN, PRINCIPAL**

B. S., M. S., Kansas State  
University, Manhattan  
Kansas

# BOARD OF EDUCATION



Treasurer, Lawrence Roudybush



Chairman, Lawrence Platt



Clerk, Judge Leroy Bradfield

## OFFICE SECRETARIES



Mrs. Jean Gorsky



Miss Betty White



JOYCE CONYERS: Home Economics; Emporia State Teachers College, Sponsor, Pep Club, F. H. A.

HUGH FERGUSON: Music; B. S. Music, Central Missouri State; M. S. University of Kansas, Sponsor, Dance Orchestra.

E. A. GORSKY: Guidance Counselor and Coach; A. B. College of Emporia; M. A. University of Kansas, Sponsor, Student Council.

RICHARD BURNS: Drafting and General Shop; B. S. Industrial Education, Pittsburg State College.

MICHAEL BELL: English; B. S. University of Kansas, Sponsor, Junior Class.

BETTY BARNES: Mathematics: B. S., M. S. Pittsburg State College, Sponsor, Junior Class.





SUE GRAY: Home Economics; B.S. Pittsburg State College - Sponsor, F.H.A.



WILLIE HILBERT: Drivers Education and Citizenship; B.S. Kansas State College, Manhattan, Kansas - Sponsor, Sophomore Class; Program Chairman for assemblies.



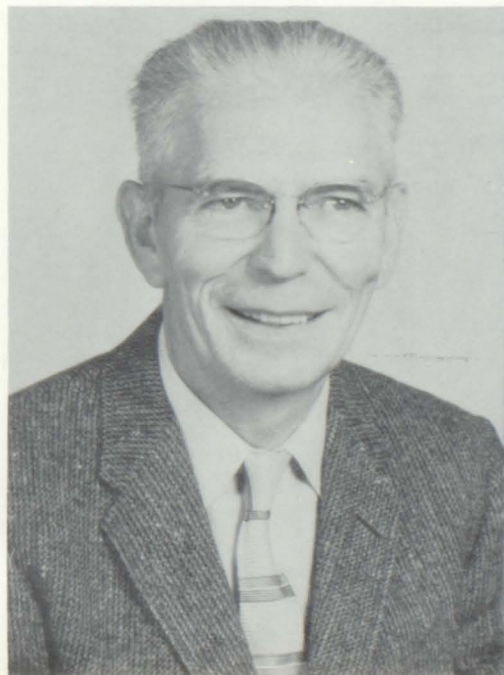
JACK HUNSLEY: Drivers Education and Art; B.S., M.S. Kansas State College, Fort Hayes, Kansas - Sponsor, Sophomore Class.

WARREN KITZMAN: Science; B.S. Central Missouri State College - Sponsor, Senior Class.



IRIS LEE: French and Spanish; A.B., M.S., College of Emporia - Sponsor, French and Spanish Clubs.

JOHN LANDERS: Mathematics and Physics; B.S. Central Missouri State College - Sponsor, Freshman Class.





PAUL MIZE: Vice-Principal; B.S. Kansas State College Manhattan, Kansas.

GEORGE PFLAUMER: Industrial Arts; B.S. Northwest State Teachers College, Marysville, Missouri.

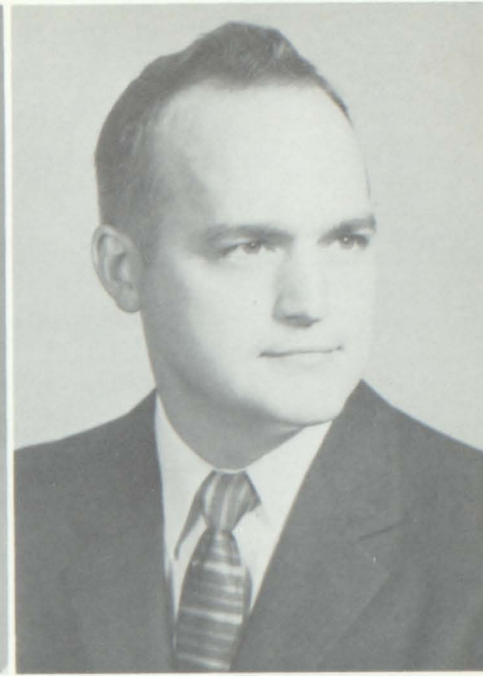
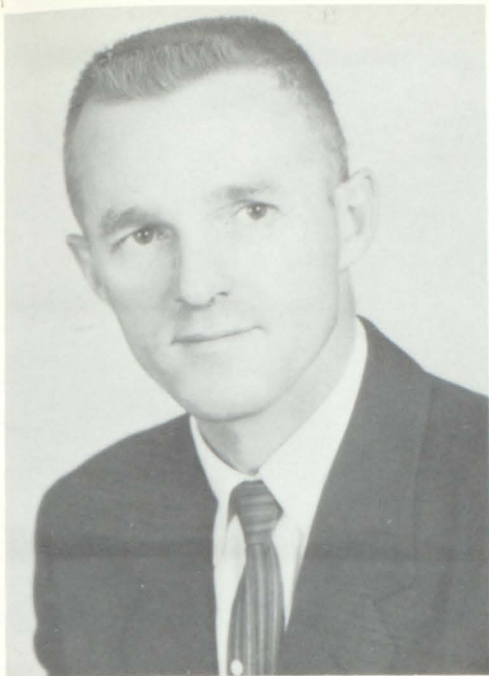
BERNICE SETTLES: Librarian; A.B. Ottawa University.

LYSLE MIDDAGH: Commerce; B.S., M.S. University of Kansas - Sponsor, Senior Class, Totem Pole, Pow Wow.

JENNIE MATTIX: English; B.S. Phillips University - Sponsor, Kayettes.

ROBERT MAGNET: Science and Math; B.S. Kansas State College, Pittsburg, Kansas - Sponsor, Bible Club.





**WILLIAM SIGLEY:** Constitution and Psychology; B.S. University of Kansas, M.A. University of Kansas City, Missouri, Freshman football and basketball coach - Sponsor, Senior Class and Hi-Y.

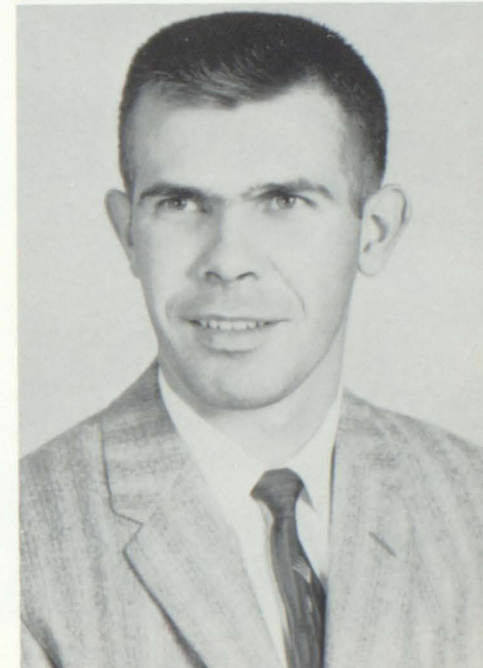
**DORIS STITH:** English and Latin; A.B. State Teachers College, Kearney, Nebraska - Sponsor, Pow Wow, Sophomore Class.

**KENNETH TEWELL:** Mathematics, Vice-Principal; B.S. Kansas State Teachers College, Emporia.

**MAX THOMPSON:** History; B.S. Kansas University - Sponsor, Hi-Y.

**DALE VEACH:** Speech and Dramatics; B.S. Emporia State Teachers College - Sponsor Freshman Class, Thespians, Exchange plays and assemblies.

**PATSY THOMASGN:** Physical Education; B.S. Kansas State Teachers College, Pittsburg - Sponsor, Pep Club.

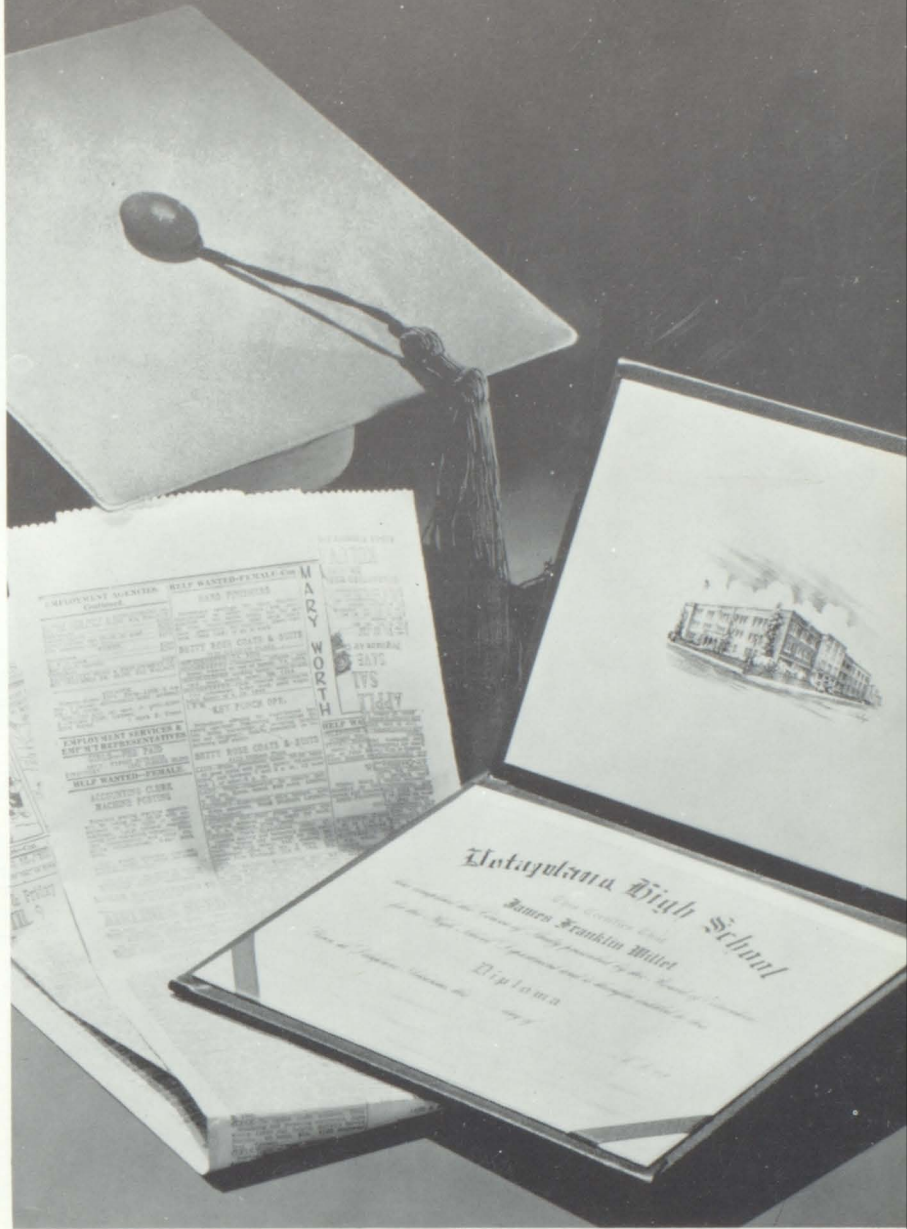
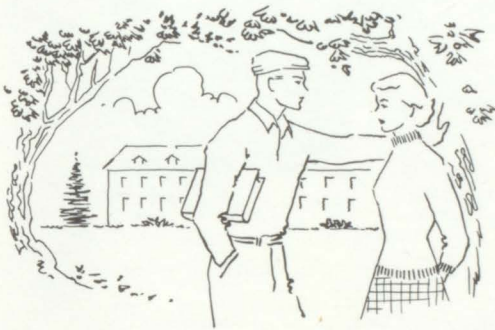




ROBERT VENTURELLA: Commerce; B. S. , M. S. Kansas State College, Pittsburg, Kansas.  
Sponsor, Totem Pole

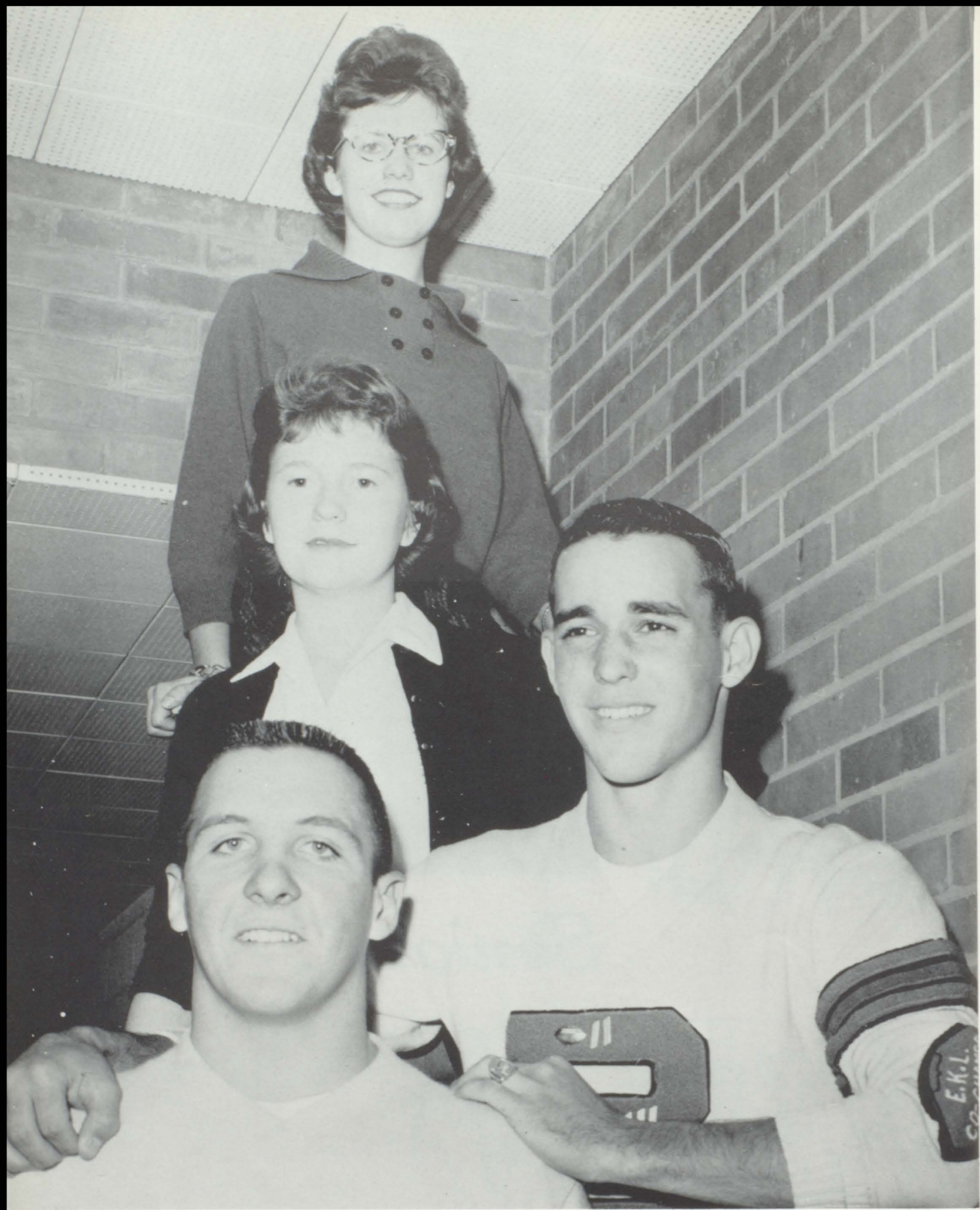
WILLIAM VITT: Auto Mechanics, B. S. Pittsburg State College.

ARROLINE ZUMBRUM: ENGLISH, B. S. Wichita University, Sponsor, Freshman Class.



# Seniors





## SENIOR CLASS OFFICERS

President, David Meinke; Vice President, Harold Klamm; Treasurer, Carol Wendt; Secretary, Barbara Scott.

KAREN EINHELLIG: Pep Club 1,2,3,4; Cheerleader 3,4; Head Cheerleader 4; Kayettes 3,4; T.V. Teen Town 3; Office Assistant 4; Homecoming Queen 3.

RUDY KELLNER: Class President 1; Student Council 1,2; Basketball 1; Bible Club 2,3,4; Debate 2; Safety Club 2,3; Latin Club 2,3,4; T.V. Teen Town 1,3; Thespians 3,4; Hi-Y 2,3,4; Chaplain 2,3; Honor Banquet 3; Exchange Play 3; Student Director 4; Boys' State 3; Boys' Glee Club 4; Totem Pole Staff 4; School Photographer 4.

SHARON BOWKER: Pep Club 3,4; Pow Wow Staff 3,4; French Club 1,2,3,4; Band 2,3,4; Kayettes 3,4; Dance Band 4; Band Festival 2,3,4; District and State Music Contest 3; Saxophone Quartet 3; All School Play 3, National Honor Society.

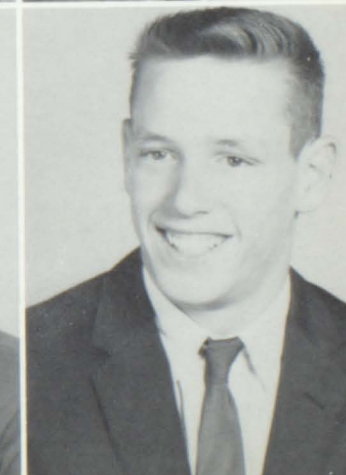
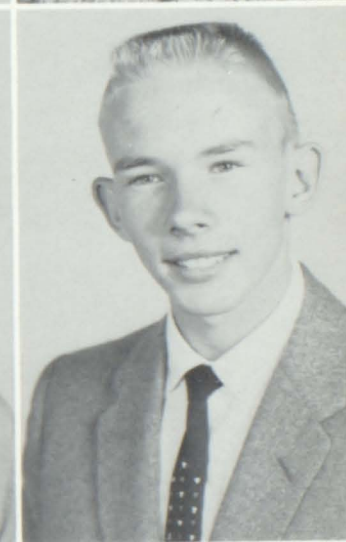
WALTER MC CASLIN: Football 4; Basketball 1,3; Track 1,2,3,4; Cross Country 2,3; French Club 2; Safety Club 3,4; Hi-Y 3,4; B-Club 2,3,4; Teen Town 3.

PAT FINNIGIN: Band 2,3; District and State Contest 3; Mixed Chorus 1; League Festival 1; Honor Banquet 2,3; Pep Club 1,2,3,4; Kayettes 3,4; Vice-President 3; Safety Club 3; F.H.A. 1,2.

TIMMIE MITCHELL: Track 3; Latin Club 3,4; Safety Club 1,3; Hi-Y 2,3,4; Secretary 2,3,4; Treasurer 2,3,4.

DARLING CONNOR: Mixed Chorus 1; Glee Club 1; Kayettes 3,4; Honor Banquet 1; F.H.A. 4; Bible Club 2,3; Office Assistant 4; Assistant Librarian 2.

KENNY BEACH: Hi-Y 3,4; Football 3,4.





DENNIS POWELL: Latin Club 1,2,3,4; French Club 2,3; President 3; Basketball 1; Bible Club 2,3; Safety Club 2,3; Totem Pole Staff 4; Boys' Glee Club 4; All School Play 3; T.V. Teen Town 3; Honor Banquet 2.

SUSAN SAUNDERS: Band 1,2,3,4; Pep Band 1,2,3,4; Drum Quartet 3,4; District Music Contest 1,2,3,4; State Music Contest 2,3; E.K.L. District Music Festival 1,2,3,4; Rhythm Masters 2,3; Pep Club 1,2,3,4; Kayettes 3,4; Latin Club 1,2,3,4; Quill and Scroll 3,4; Pow Wow Staff 3,4; Production Staff 4; Annual Staff 4; Editor 4; Student Council 2; Journalism Conference 3,4; Honor Banquet 1,2,3; Teen Town 1; Assistant Student Director All School Play 4; E.K.L. Play Day 1; E.K.L. Speech Contest 4; District Speech Contest 4.



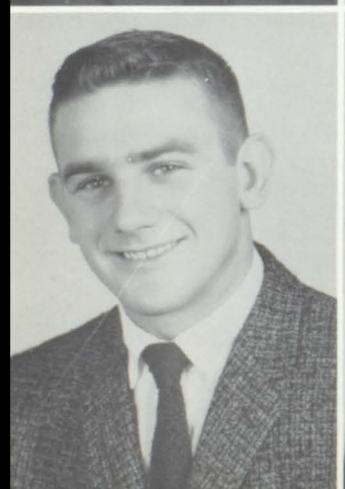
ROY GOBLE: Football 1, 3, 4; B-Club 3,4; Spanish Club 1,2; Safety Club 2,3,4; Idlers 1.

BARBARA SCOTT: Pep Club 1,2,3,4; Treasurer 3; Glee Club 1,3,4; Accompanist 3,4; Kayettes 3,4; President 4; Class Vice-President 2; Class Secretary 4; Latin Club 1,2,3,4; French Club 3,4; Secretary 3; Band 1,2,3,4; District Festival 1,2,3; District Music Contest 1,2,3; State Music Contest 1,2,3; Trombone Trio 2,3; Dance Band 1,2,3; Girls' State Alternate 3; Drum Major 4; School Play 4; Accompanist for Boy's Glee Club 4; P.T.S.A. pianist 4; Honor Banquet 1,2,3; Totem Pole Staff 4; Thespians 4; Salutatorian, National Honor Society.



DON VICKERS:

GERRI SCHOFIELD: Shawnee Mission 1,2; Pep Club 3,4; All School Play 3,4; F.H.A. 4; Kayettes 3,4; Homecoming Queen Candidate 3; Flag Carrier 4; Kayettes District Conference 4; Totem Pole Staff 4; Safety Club 4; Secretary 4.



ALVIN KNIGHT: Basketball 1,2,3,4; B Club 2,3,4; Track 1; Student Council 2,3; Class President 2; All Area Honorable Mention 3; Student Council Vice-President 3; Secretary-Treasurer B-Club 4; T.V. Teen Town 2,3.

PAT JENNINGS: Pep Club 2,3,4; Safety Club 3,4; Mixed Chorus 1, 2, 3; Football Homecoming Attendant 1,2; Class Secretary 1; F.H.A. State Meeting 3; Exchange Play 1; Annual Staff 4; Kayettes 3,4; District Music Festival 1,2,3; Library Assistant 4; Student Council 2; Thespians 4; T.V. Teen Town 3; F.H.A. District Meeting 3,4; F.H.A. President 4; Office Assistant 3; All School Play 4; All School Play Production Staff 3; Production Staff Pow Wow 4.

BARBARA WRIGHT: Band 1,2,3,4; Dance Band 2; Saxophone Quartet 2,3; District Music Festival 1,2,3,4; District Contest 3; Honor Banquet 1,2,3; Pep Club 1,2,3,4; Secretary 4; Class Secretary 2; Class Vice-President 3; Popularity Candidate 1; Annual Staff 4; Kayettes 3,4; Homecoming Attendant 4; National Honor Society.

MIKE WOOLF: Football 1,2,3,4; Basketball 1,2,3,4; Track 1,2,3,4; B-Club 1,2,3,4; Vice-President 3; President 4; E.K.L. Honorable Mention 2; All Area Honorable Mention 3; District Honorable Mention 3; E.K.L. Co-Champion 2; Football King 4; Junior Class President; Student Council 3; Honor Banquet 3; Popularity Candidate 1.

CAROL WENDT: Pep Club 1,2,3,4; Kayettes 3,4; Latin Club 2,3,4; French Club 3,4; Annual Staff 4; Honor Banquet 1,2,3; Class Treasurer 3,4; Band 1,2,3,4; District Music Festival 1,2,3,4; District Music Contest 1,2,3,4; State Music Contest 3; Mixed Chorus Accompanist 2; Pep Band 3,4; Saxophone Quartet 3; Senior Homecoming Candidate 4; National Honor Society.

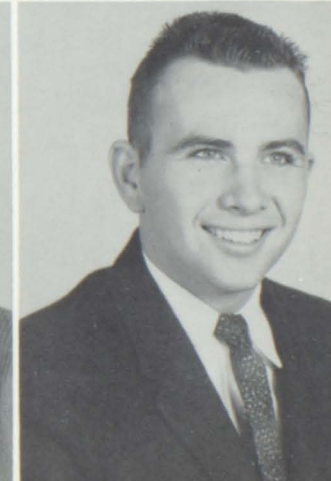
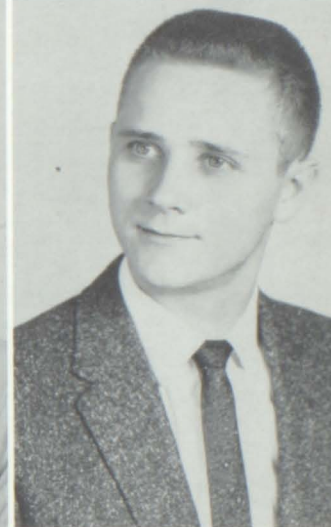
ED LYNN: Football 1,2; Basketball 1,2,3,4; B-Club 3,4; Safety Club 1,2,3,4; Officer 1,2,3; Band 1,2,3; District Music Festival 1,2,3; District Contest 2; Band Festival 1,2,3; Honor Banquet 2,3; Idlers 1; Boys Glee Club 4.

SHARON LAWRENCE: Safety Club 2; F.H.A. 1,2,4; Song-leader 4; Kayettes 3,4; Varsity Cheerleader 3,4; B-Team Cheerleader substitute 1; Pep Club 1,2,3,4; Glee Club 1,4; District Music Contest 1,2,3,4; State Contest 2; Flag Carrier for Band 2,3,4; Thespians 3,4.

HAROLD KLAMM: B-Club 1,2,3,4; Football 1,2,3,4; Basketball 1,2,3,4; Track 1,2,3,4; B-Club Treasurer 3; Vice-President 4; Senior Class Vice-President; T.V. Teen Town 3,4; Spanish Club 3; State Track Meet 2,3,4.

TORIE TRAVIS: Pep Club 1,2; F.H.A. 3; Kayettes 3,4; Kayette Cabinet 3,4; Kayette District Conference 4; Safety Club 3,4; Latin Club 2,3,4; Spanish Club 4; E.K.L. Play-day 1; Honor Banquet 2,3; Band 2,3; Pep Band 2; District Music Festival 2,3; Totem Pole Staff 4; Class Vice-President 1; Treasurer 2; Winter Wonderland Candidate 2.

BILL TABOR: Football 2,4.





BILL SEDGWICK: Spanish Club 2,3; Officer 3; Hi-Y 2,3,4; President 2,3,4; Student Council 4; Boys State 3; Honor Banquet 1,2; Track 2; Bible Club 1,2,3; Totem Pole Business Manager 4; Rotary Science Award 3; Safety Club 2,3; Journalism Conference 4; T.V. Teen Town 1; National Honor Society.

LAVONNE KLAHR: Band 1,3,4; Mixed Chorus 1; Glee Club 3; French Club 1,2,4; Kayettes 3,4; Pep Club 3,4; Honor Banquet 1,3; District Music Festival 1,3,4; District Music Contest 1,3,4; State Music Festival 3; Southeast High School 2.



GLENN PRICE: Spanish Club 4; Latin Club 1,2,3,4; B Club 3,4; Basketball 1,2,3,4; Track 3; Cross Country 3; Student Council 1; Bible Club 2,3; Boys' State 3; Pow Wow Staff 4; Annual Staff 4.

PEGGY LANGFORD: Safety Club 1,2; Bible Club 2,3; Pep Club 2,3,4; Kayettes 3,4; Class Secretary 3; Office Assistant 3; Honor Banquet 1,2,3; National Honor Society.



Lloyd Berrey; Bible Club 1,2,3; President 4; Band 1,2,4; Pep Band 1,2,4; Hi-Y 3,4; Officer 4; Totem Pole 4; Latin Club 2,3,4.

CHARLOTTE CHAMBERLAIN: Band 1,2,3,4; Clarinet Quartet 4; Majorette 3,4; Kayettes 3; Pep Club 4.



DONALD MC ANERNEY

STELLA BAKER: Piper High School 1,2,3; Spanish Club 4.

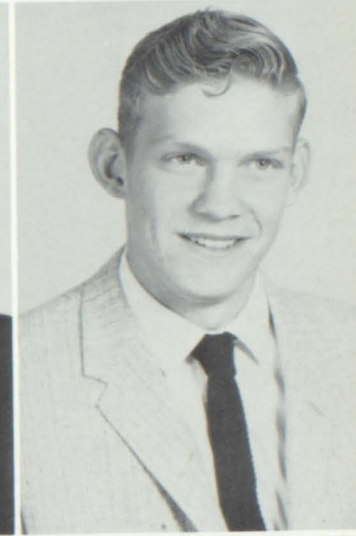
KAREN KEEN: Pep Club 1,2,3,4; President 4; Kayettes 3,4; Treasurer 4; Annual Staff 4; Crystal Ball Queen 3; T.V. Teen Town 2; Band 1,2,3,4; Pep Band 2,3,4; District Music Festival 2,3; District Music Contest 1,2,3; Honor Banquet 1,2,3; Production Staff All School Play 4; Pow Wow Production Staff 4; National Honor Society.

CHARLES SPRING



DARLINE MIZE: Pep Club 2,3,4; Sergeant-at-Arms 4; Kayettes 3,4; Journalism Conference 4; Annual Staff 4; Associate Editor 4; Student Council 3,4; Production Staff All School Play 4; Pow Wow Production Staff 4; Assistant Librarian 3,4.

LAWRENCE DELANA: Football 3,4; B-Club 3,4; Honor Banquet 2.



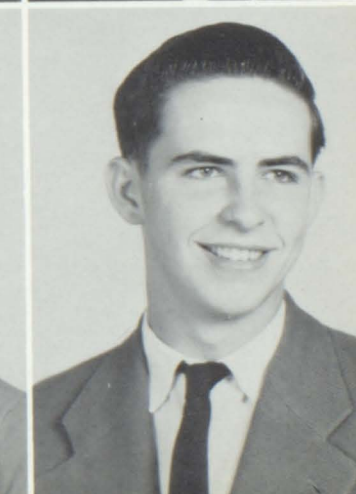
MARY ANN MEADE: Band 1,2,3,4; Pep Band 3,4; District Festival 1,2,3,4; Glee Club 1,2; Pep Club 2; Student Council 3,4; Secretary 4; Honor Banquet 1,2,3; F.H.A. 3,4; Safety Club 3; Pow Wow Production Staff 4; Totem Pole Staff 4; Kayettes 3,4; Teen Town 2,3; All School Play Production Staff 4.

RICHARD PRUITT: Football 1,2,3,4; Basketball 1,2; Track 1,2,3,4; B Club 1,2,3,4; F.F.A. 1,2,3; Teen Town 2.



SHARON MERRITT: Class Treasurer 1; French Club 1, 2,3; Pep Club 1,2,3,4; Glee Club 1,2,3,4; Vice-President 3; Thespians 2,3,4; Band 3,4; Safety Club 2,3; Secretary 2; Kayettes 3,4; District Music Festival 1,2,3,4; State Music Contest 2; District Speech Contest 2,3; Exchange Play 2,3; All School Play 3; Honor Banquet 1,2,3; T.V. Teen Town 1,2,3; National Honor Society.

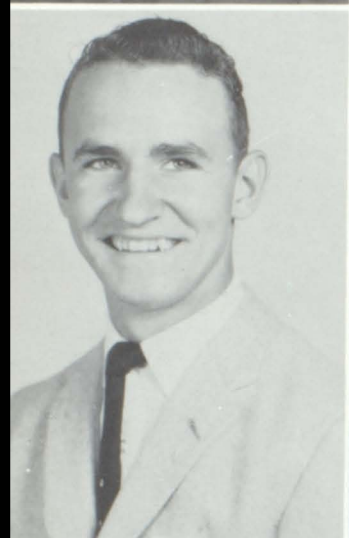
GEORGE POLLOCK: F.F.A. 1,2,3; Hi-Y 3,4; Bible Club 1,2; Annual Staff 4; Basketball 1.





JAMES FAUNCE

MARGARET FENTON: Safety Club 1; Bible Club 1,4; Spanish Club 4.



HARVEY HUNDLEY: Honor Banquet 1,2,3; B-Club 3,4; Latin Club 1,2,3,4; Hi-Y 2,3,4; Vice-President; National Honor Society.

CAROL WATKINS: F.H.A. 1,2,3; Secretary 4; Vice-President 3; Kayettes 3,4; Latin Club 1,2,3,4; Honor Banquet 1,3.



LELAND EASTWOOD: Spanish Club 2,3; Bible Club 3,4.

JUDY HUBBARD: Kayettes 3,4; Safety Club 2,3; Spanish Club 3.



BILL HEWITT: Basketball 1; Bible Club 1,2,3,4; Boys' Glee Club 4.

PAT DEAY: Band 1; F.H.A. 1,2; Spanish Club 2,3; Safety Club 2,3; Kayettes 3,4.

CAROLYN JONES: Mixed Chorus 1; French Club 1,2,3,4;  
Glee Club 3,4; Kayettes 3,4; Student Librarian 2; Office  
Assistant 3; Honor Banquet 2,3; Music Festival 1,3,4;  
Music Contest 1,3,4.

ISADOR PETTY

THERESA FORD: Spanish Club 3,4; Kayettes 3,4.

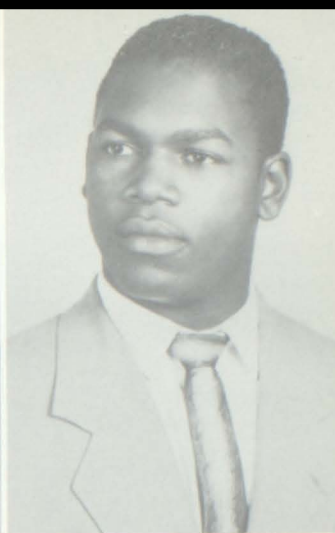
HERBERT BROWN

DOROTHY CROSBY: Bible Club 1,2,3,4; Glee Club 1,2.

MENELIKE JOHNSON, EL: Football 1; Basketball 1,2;  
Hi-Y 3.

GWEN MC CALLOP: French Club 1; Bible Club 2,3.

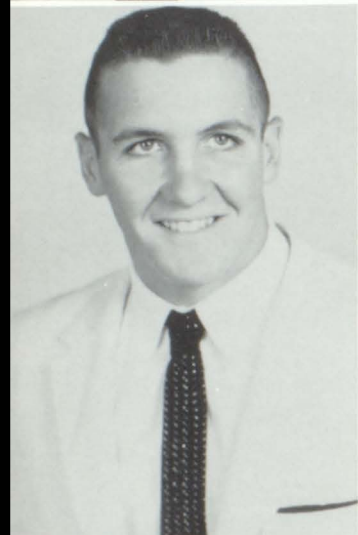
GEORGE MURRAY: Basketball 1,2,3; Spanish 4; Bible  
Club 1; Safety Club 2; Boys Glee Club 4.





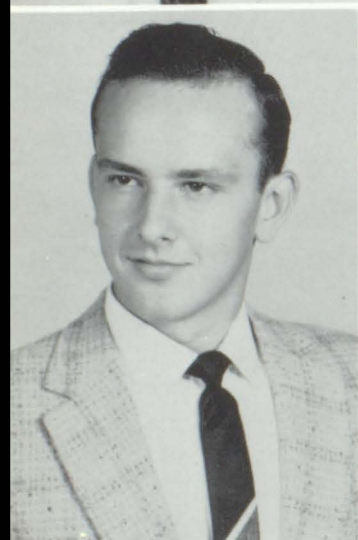
HARRELL DOTSON: Honor Banquet 2,3; Quill and Scroll 3,4; Pow Wow Staff 3,4; Annual Staff 4; Rotary Club Achievement Award 3; President of Student Council 4; State Student Council Conferences at Lawrence 4; Football and Basketball Statistician 3,4; School Correspondent to Kansas City Kansas 3,4; National Honor Society.

CHERYL KELLY: Palmdale, California 1,3; Leavenworth, Kansas 2; Bible Club 4; Pep Club 4.



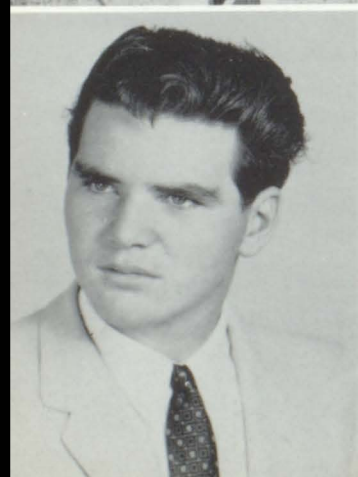
DAVID MEINKE: Bible Club 1,2,3,4; Vice-President of Programs 4; President 2,3; F.F.A. 2,3; Treasurer 3; Football 1,2,3,4; Basketball 1,3,4; Track 3,4; Latin Club 1; B Club 2,3,4; Class President 4; Student Council 4; National Honor Society.

MARY LOU REYNOLDS: Pep Club 1,2,3,4; Bible Club 1,2,3,4; Vice-President 3,4; Latin Club 2; F.H.A. 3; Kayettes 3,4.



CHARLES HALE: Latin Club 1,2; French Club 2,3; Honor Banquet 2,3,4; Basketball 1,4; Hi-Y 3,4; Totem Pole 4; T. V. Teen Town 3; French Club Treasurer 3; Hi-Y. Sports Representative.

SALLY WILKERSON: Pep Club 1,2,3,4; Kayettes 3,4; Spanish Club 3; All School Play 3; Honor Banquet 3; Pow Wow Production Staff 4.



LEE MONKS: Monterey, California 1,2,3; Football 4; B-Club 4; Hi-Y 4.

JUANITA PICKETT: Pep Club 1,2,3; Bible Club 1,2; Latin Club 2,3,4; Glee Club 1,2; Music Festival 1,2; Mixed Chorus 2; Honor Banquet 1,2,3; Kayettes 3,4.

PAT NUESSE: Van Horn and Southeast, K.C., Mo., 1; R.L. Downing, Minnesota 2; Kayettes 3,4; French Club 3,4; Safety Club 3,4; Bible Club 3; Librarian 4; All School Play 3.

MIKE METZLER: Student Council 2,3,4; Latin Club 2,3,4; Bible Club 2,3; Safety Club 2,3; Pow Wow Staff 3,4; Quill and Scroll 4; Totem Pole Staff 4; Hi-Y 2,3,4; Rotary Award, Mathematics. 3.

JANICE BARNARD: Pep Club 1,2,3; Kayettes 3,4; Latin Club 1,2,3,4; F.H.A. 1,2.

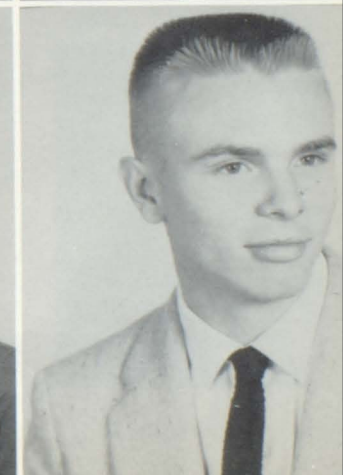
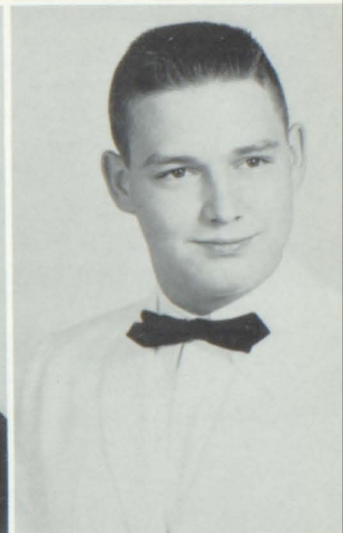
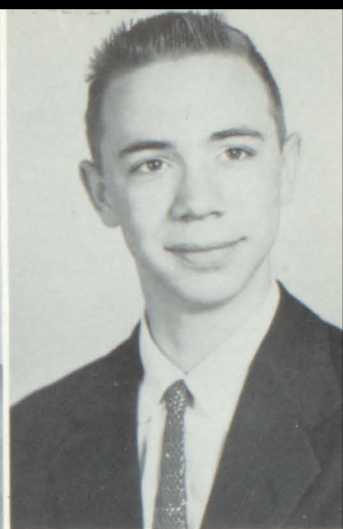
GARY BENDER: Bible Club 1,2,3,4; Idlers 1; Football Manager 1.

MYRNA WAGNER: Spanish Club 2,3,4; Latin Club 1; Safety Club 2,3; Kayettes 3,4; Bible Club 1,2.

ALVIN SMITH

SHARON COLEMAN: Band 1,2,3,4; Clarinet Trio 1; Clarinet Quartet 1,2,3,4; District Music Contest 1,2,3,4; State Music Contest 2,3; League Music Festival 1,2,3,4; Clarinet Choir 3; Rhythm Masters Dance Band 2,3,4; Glee Club 1; Pow Wow 2,3,4; Editor 4; Quill and Scroll 3,4; Kayettes 3,4; Student Council 1; Safety Club 1,2; F.H.A. 1; Latin Club 1,2,3,4; District Speech Contest 3,4; League Speech Festival 4; "Nine Girls" 4; Thespian Honor Society 4; Sunflower Girls' State; 3 D.A.R. Good Citizen's Award 3; National Merit Citation 4; Rotary Club English Arts Award 3; Honor Banquet 1,2,3; Valedictorian, National Honor Society.

TOBY CHAMBERLAIN: Football 1,2,3,4; Track 1,2,4; B Club 4; Spanish Club 3; Safety Club 2,3; Hi-Y 2,3,4; Bible Club 1.





JANICE FOGLE: Safety Club 2,3; Pep Club 2,3,4; Spanish Club 3; Kayettes 3,4; French Club 4; Majorette 4.

PATSY MC BRIEN: Piper High School 1,2,3; Pep Club 4.



DORTHA MOSS: Drum Quartet 3; League Festival 1,2,3; State Contest 3; Safety Club 2,3,4; Kayettes 3,4; Pep Band 1,2,3; District Contest 1,2,3.

PHYLLIS GARSTECKI: Safety Club 3,4; Secretary 4; Kayettes 3,4.



JANICE REHM: Spanish Club 2,3,4; Bible Club 2; Safety Club 2,3,4; Kayettes 3,4; Honor Banquet 1,2.



Pat Jennings



Mike Woolf



Barbara Wright



Torie Travis



Bill Tabor



Sharon Coleman



Lavonne Klahr



Sharon Lawrence



Glen Price



Harvey Hundley



Harrell Dotson



Sally Wilkerson



Mary Ann Meade



Lee Monks



Stella Baker



Charles Spring



Richard Pruitt



Charlotte Chamberlain and  
Bill Sedgwick



George Pollock



Darline Mize



Cheryl Kelly



Sharon Merritt



Roy Goble



Toby Chamberlain



Bill Sedgwick



Barbara Scott



Karen Keen



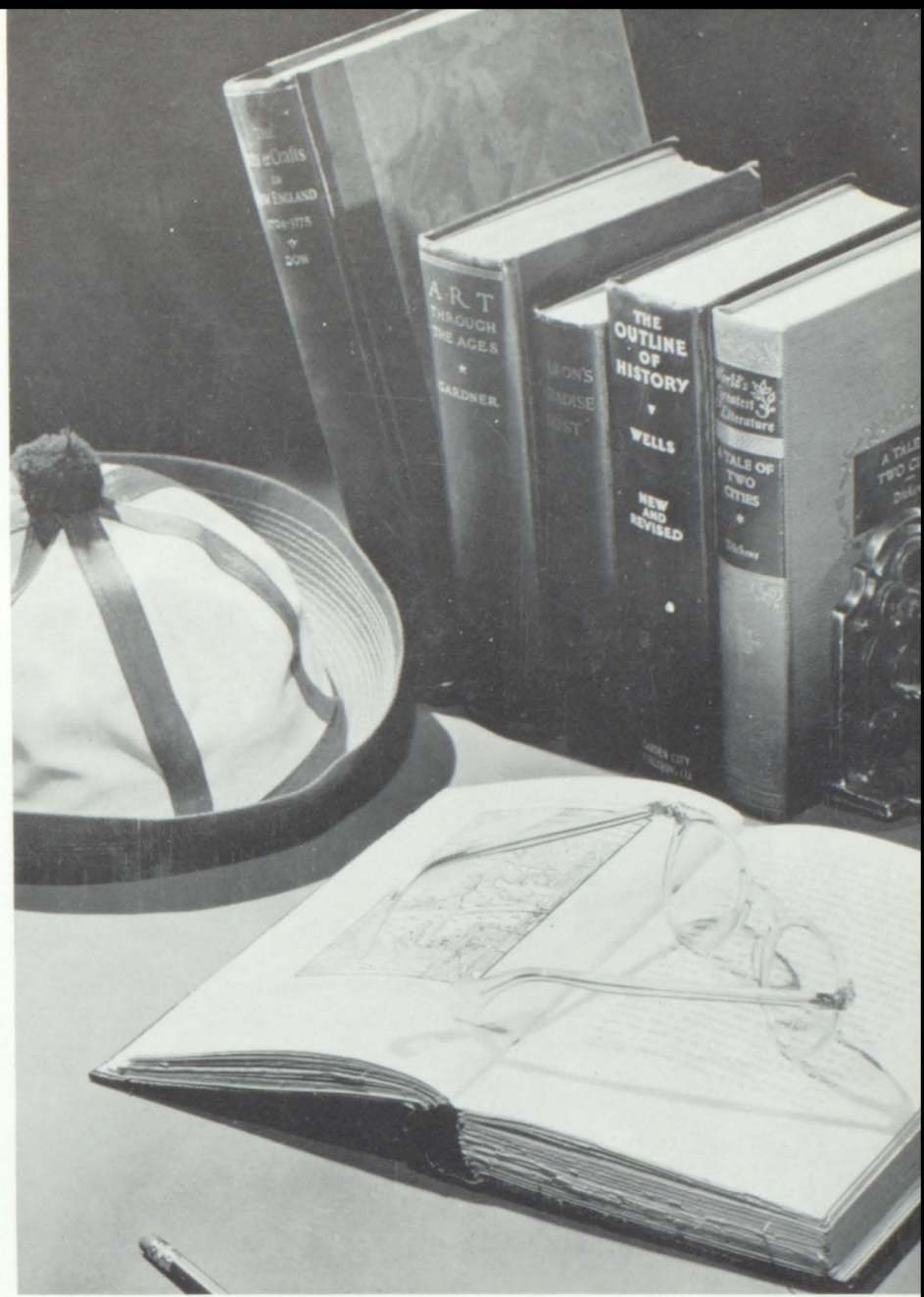
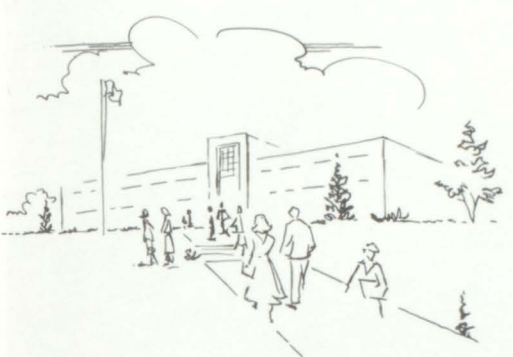
Sue Saunders



Pat Nuesse



Carol Wendt



# *Underclassmen*





## JUNIOR CLASS OFFICERS

John Carson, Vice President; Betty Pilger, Secretary; Sylvia Issitt, Treasurer; Bill Hilliard, President.

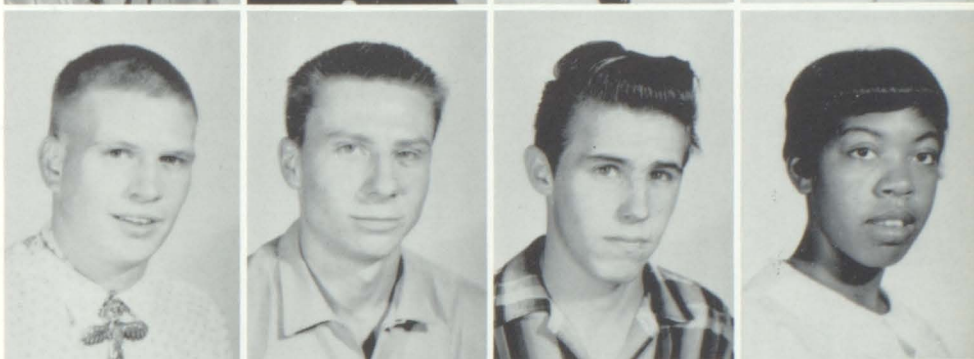
Tom Anderson  
Roger Barney  
Kathy Beach  
Bobbie Bond



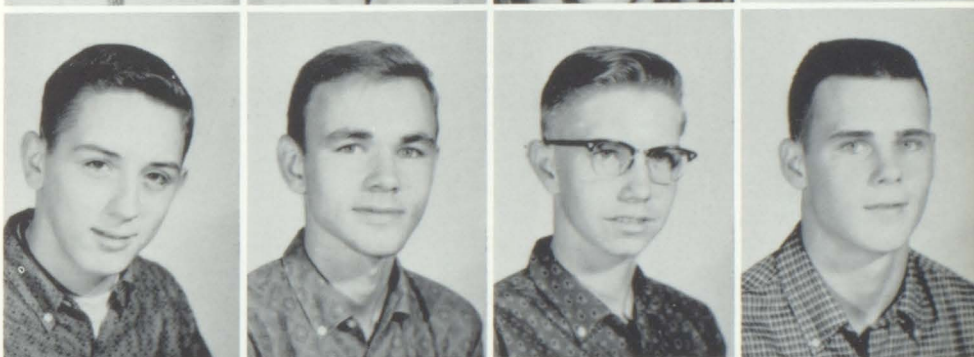
Mike Boyce  
Sandy Boyd  
John Brown  
James Bryant



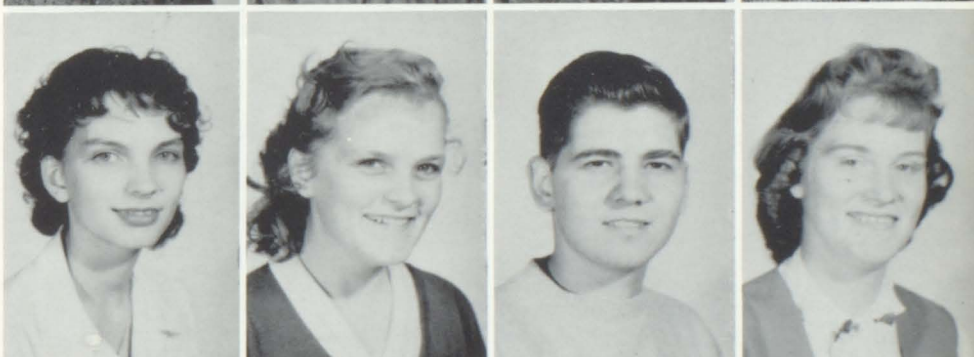
Milton Bryant  
Joe Cannon  
Philip Carl  
Mary Crosby



John Carson  
Bill Claxton  
Bob Cline  
Larry Cohan



Marilyn Cooper  
Carol Copenbarger  
Kenneth Curnette  
Charlotte Dale



Jack Davis  
Marion Davis  
Carolyn DeMaranville  
Maxine DeMaranville





Bill Einhellig  
Jean Ann Elmer  
Darlene Espy  
Jim Feleay



Frank Fenton  
Gale Fishbaugh  
Vernetta Ford  
Lloyd Forrester



James Foster  
Earl Freeman  
Venissia Gardner  
Larry Gebhardt



Sharon Hall  
Mary Harrell  
Lily Hauetter  
Mary Helvern



Marie Hernandez  
Bill Hilliard  
John Holloway  
Linda Holt



Herschel Hylton  
Beverly Huggins  
Pat Isabell  
Sylvia Issitt

Frankie Jackson  
Janice Jones  
Sharon Jones  
Phillip Knight



Bill Kuchenthal  
Sara Kuhn  
Glenna Layman  
Linda Lehman



Bill LeRow  
Joyce Lindsay  
Sandy Long  
Lonetta McDonald



Charles McCord  
Rosie McAnerney  
Willie McWashington  
Connie March



Dean Miller  
Rosie Miller  
Mary Moffitt  
Martha Newton



Frank Novich  
Eric Nyman  
Patty Orser  
Jeannine Papineau





Jerry Pembleton  
Judy Pettis  
Betty Pilger  
Beverly Pinkepank



John Price  
Darlene Rader  
Mary Ann Richardson  
Betty Robinson



Bonnie Sandburg  
Maxine Sandburg  
Peter Savings  
Karl Shiedt



Mary Smith  
Rosilee Sowers  
Irene Stoneking  
Bobby Sparks



Frank Swenton  
Juanita Thompson  
Kathy Thompson  
Beverly Umbenhower



John Vaughn  
Clinton Vickers  
Bob Wall  
Martha Wasson

Terry Wasson  
Rachel Wilkins  
Sue Wiley  
Bette Williams



Juanita Williams  
Jesse White  
Jerry Wright  
Marilyn Wright



Sandy Yount  
Johnnie Hylton  
Dan Hodges





## SOPHOMORE CLASS OFFICERS

Kurt Woolf, Treasurer; Larry Arnett, Secretary; John Papineau, Vice President; John Meinke, President.

Linda Allen  
Linda Anderson  
Larry Arnett  
David Blew



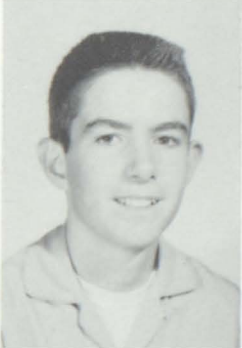
Mary Blew  
Patricia Boals  
Arthur Bolton  
James Bond



Thelma Bress  
Annora Bryant  
Kay Burnam  
Tom Caldwell



Carol Cannon  
Dennis Chambers  
Harold Clements  
Rayma Dickson



Robert Dotson  
Ivan Dunn  
Ronnie Dunston  
Sharon Eastwood



Mike Edwards  
Don Einhellig  
Ray Enloe  
Angela Fairbanks





Dick Feilbach  
Esther Fenton  
Robert Fenton  
Bonnie Ferguson



Barbara Finnigan  
Ruby Ford  
Capitola Foster  
Neil Freeman



Dick Frey  
Robert Gardner  
Neta Gillham  
Keith Goodwin



Fred Hale  
Bill Harper  
Jim Henderson  
Mickey Henderson



Linda Herrin  
Janice Hicks  
Robert Higginbotham  
Delmar Hininger



Sharon Houseworth  
Terry Huntley  
Lillian Hurd  
Jana Jenkins

Junior Johnson  
Jean Keeler  
Sam Keen  
Pat Kelly



David Klahr  
Alfrieda Knight  
Linda Kuchenthal  
Marilyn Kuhn



Joe Langford  
Ruby Langford  
Patricia Lewis  
Marilyn McCaslin



Herman McConico  
Shirley McCord  
Linda McDowell  
Narena McMackin



Lonnie McWashington  
Thelma Mann  
John Meinke  
Roy Mills



Darrell Mitchell  
Carol Nash  
Jerry Nick  
Lois Noe





Cecil Oldham  
Frieda Oliver  
John Papineau  
Frank Parker



Brenda Penrod  
Sharyl Peoples  
Betty Phillips  
Glenda Pickett



Don Plummer  
Ethel Pollock  
Becky Reed  
Darlene Reiman



Janet Roark  
Dorothy Roth  
Carlene Roudybush  
Merlin Saunders



Diana Savings  
Linda Schrader  
Sally Scott  
Bernice Sedgwick



Charles Shepard  
Karen Shultz  
Bill Sickman  
Vergie Stanley

Rocky Stedman  
Connie Steart  
Richard Stovall  
Esther Thomas



Barbara Thompson  
Rick Tinberg  
Jim Tomlin  
Sharon Watkins

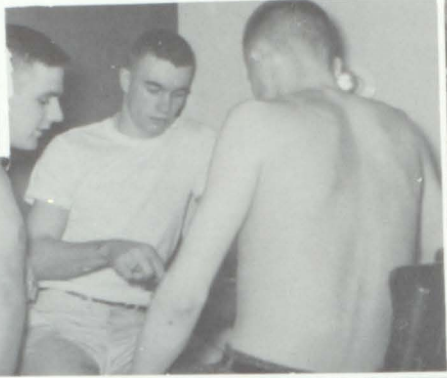


Marcia Wendt  
Sunny Williams  
Thelma Williams  
Tapley Williams

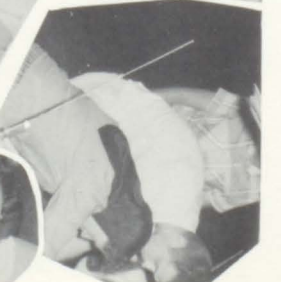


Dorothy Wolfrom  
Kurt Woolf  
Roxe Zimmerman





KEEP SMILING





## FRESHMAN CLASS OFFICERS

Dennis Bowker, President; Charles Brown, Vice President; Susan Chandley, Secretary; Fred Watson, Treasurer.



Richard Aldridge  
 Leslie Betancourt  
 David Bosando  
 Dennis Bowker



Bob Branson  
 Charles Brown  
 Bob Butler  
 Bob Cannon



Gary Carriger  
 Frank Carter  
 Robert Chamberlain  
 Susan Chandley



Jeannie Clark  
 Bill Connor  
 Judy Coppenbarger  
 Elvin Crosby



Sandra Dale  
 Ineal Davenport  
 Willie Davenport  
 Tom Davis



Rosena Delana  
 Diane Demming  
 Emmett Dickerson  
 Sandra Dunivan

Gary Eastwood  
David Elmer  
James Everhart  
John Fizell



Robert Freeman  
Bill Gaither  
David Garr  
Eddie Goble



Mike Greene  
Georgia Grimm  
William Haney  
Marilyn Harris



Charles Hedden  
Evelyn Henderson  
Yvonne Hess  
Elaine Hemmerling



Jim Hines  
Lonny Hinote  
James Hoffine  
Judy Hogan



Pat Holley  
Jerry Hoskins  
Betty Howard  
Steve Hulbert





Anna Hylton  
 Charles Isabell  
 Calvin Jackson  
 Gary Jardon



Janice Johns  
 Sandra Jones  
 Arthur Johnson  
 Wanda Jolliff



Ronnie Kelley  
 Shelia Kempfer  
 John Lee  
 Sylvia Littlejohn



Roger Loehr  
 Robert Lynn  
 Barbara Mansfield  
 John McAnerney



Wayne McDonald  
 Clayton McGee  
 Bill McKinney  
 Robert McLaine



Elsie McMackin  
 Melvin McMackin  
 Mary Mellott  
 Mitchell Mellott

Karen Meredith  
Jay Merriam  
Mary Ann Miesse  
David Mize



Gloria Mize  
Dinty Moore  
Georgia Neal  
Joyce Newton



Sharon Novich  
Russell Nunn  
Joe Orser  
Barbara Papa



Marion Passler  
Pam Puntteney  
Dorothy Purtee  
Bill Richardson



Keith Roberts  
Maria Rocha  
Rex Rust  
Richard Sandburg



Joyce Saunders  
Robert Savings  
Charles Schofield  
Frank Seaton





Eugene Sedgwick  
 Mary Shultz  
 Jim Sickman  
 Frank Snow



Marvin Souders  
 Norma Stacey  
 George Theden  
 Glen Tinder



George Trickett  
 Becky Vogan  
 Donna Wall  
 Dave Warrensburg



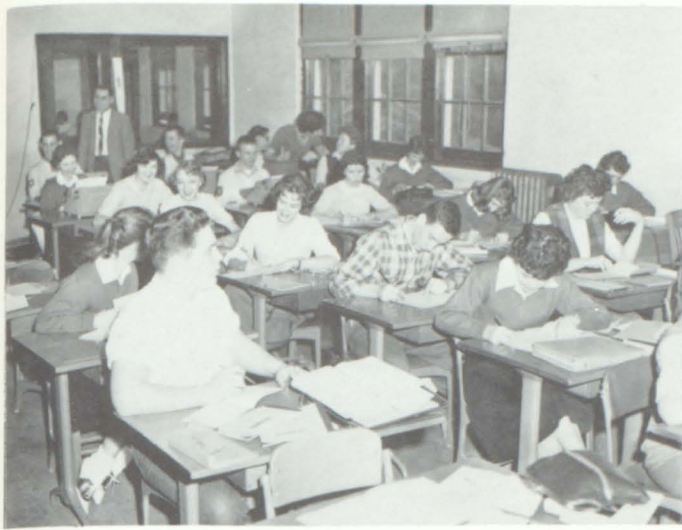
Fred Watson  
 Barbara West  
 Betty White  
 Joyce White



Shirley Williams  
 Tommy Wilson  
 Karen Winkler  
 Robert Yazel



Jerry Young



The Business Department



The Library

DEPARTMENTS



The English Department



The Industrial Department



The Science Department



The Home Economics Department

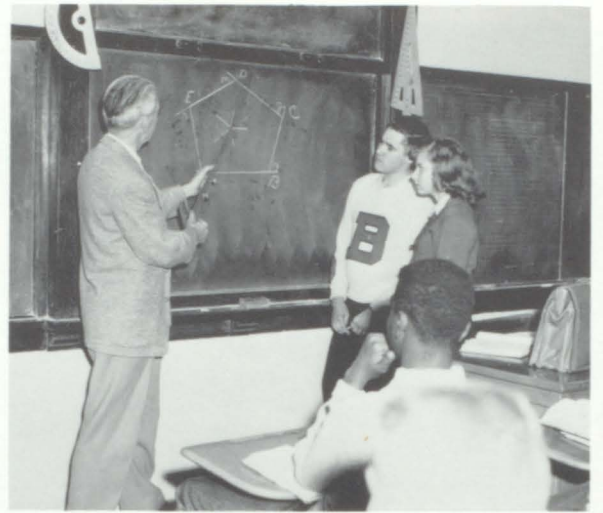


The Home Economics Department



The Language Department

DEPARTMENTS



The Math Department



The Physical Education Departments



The Physical Education Department

# BONNER SPRINGS

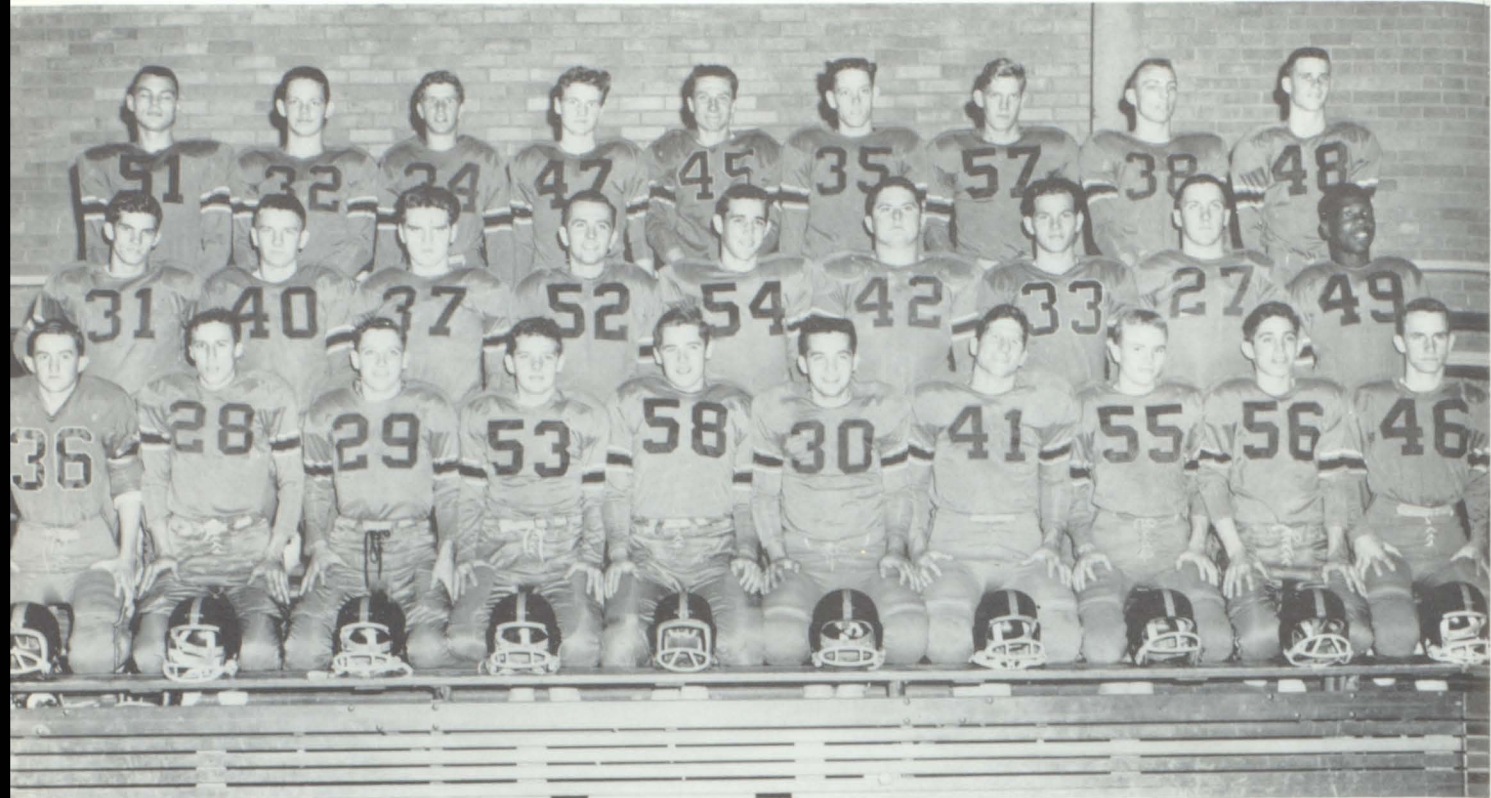
## TRACK RECORDS

HIGH HURDLES	16.0	PIERCE	1950
100 YD. DASH	10.1	DePRIEST	1951
MILE RUN	4:56.7	KNIGHT	1953
880 RELAY	1:34.9	M. REYNOLDS, JONES, M. REYNOLDS, WOOLF	1959
440 YD. DASH	51.2	DePRIEST	1951
LOW HURDLES	21.4	BUDY	1955
880 YD. RUN	2:01	BUDY	1955
MEDLEY RELAY	3:39	TATE, CLINE, MIKESICH, BUDY	1954
220 YD. DASH	23.4	WOOLF	1959
MILE RELAY	3:43.3	HARRINGTON, CHAMBERLAIN, JONES, MILLIKEN	1957
SHOT PUT	46'1"	M <sup>c</sup> INTYRE	1955
DISCUS	134'4½"	FELEAY	1956
JAVELIN	152'	KLAMM	1959
BROAD JUMP	21'6½"	TATE	1955
POLE VAULT	12'7½"	M. REYNOLDS	1959
HIGH JUMP	5'8½"	M. REYNOLDS	1956

# A T H L E T I C S



# FOOTBALL



FIRST ROW: T. Anderson, W. McCaslin, J. Meinke, T. Wasson, S. Keen, R. Goble, J. Feleay, T. Chamberlain, B. Hilliard, H. Hundley. SECOND ROW: J. Hylton, R. Barney, L. Monks, B. Tabor, H. Klamm, R. Pruitt, D. Vickers, D. Meinke, H. McConico. THIRD ROW: K. Woolf, R. Enloe, J. Wright, M. Saunders, J. Cannon, K. Beach, L. Delana, M. Woolf, L. Cohan.

OPPONENTS	WE	THEY
TONGIE	25	6
MEIGE	7	33
ROSEDALE	0	27
TURNER	12	12
OSAWATOMIE	18	6
PAOLA	32	0
ARGENTINE	18	13
OLATHE	27	7
DE SOTO	7	0

It turned out to be a winning season on the gridiron for the Braves, who wound up in a second place tie with Olathe in E.K.L. competition.

It was a season of broken records for the team. For the first time in the history of the school a Bonner 11 ran up a 53-0 score against an opponent, who happened to be DeSoto. This season saw Mike Woolf break just about every known individual record to be kept for the school.

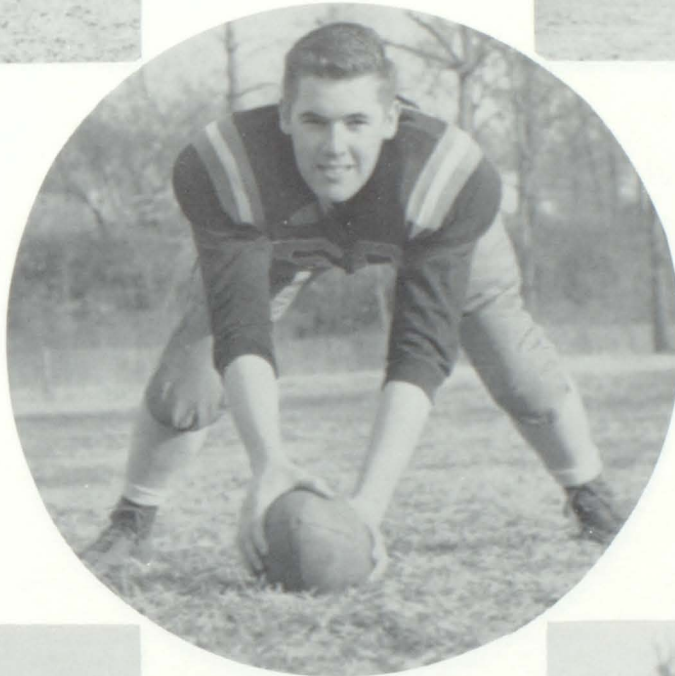
The team can boast of not having lost a single game in sight of the newly erected scoreboard. The entire town got behind the project and after a slow start was able to get the board up in time for the first home game. The board showed 121 points for the Braves while only racking up 19 for their opponents during their four home games. For the entire season, the team ran up 192 points while the opponents came up with 116.



Mike Woolf  
Halfback



Larry Cohan  
Quarterback

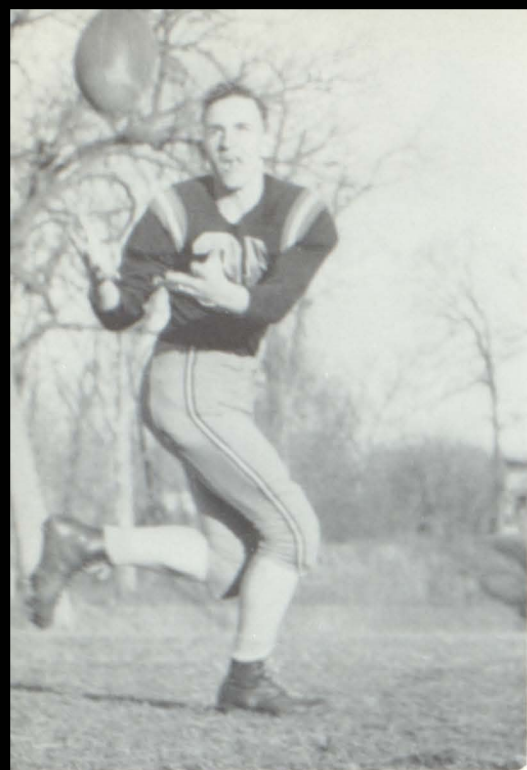


Sam Keen  
Center

Jim Feleay  
Fullback

Harold Klamm  
Halfback





Harvey Hundley  
End



Dan Hodges  
End



Kurt Woolf  
Tackle

Dave Meinke  
Guard



Richard Pruitt  
Guard





Don Vickers  
End



Lee Monks  
Center



Bill Tabor  
Tackle

Lawrence Delana  
Tackle



Roy Goble  
Guard



# FROSH FOOTBALL



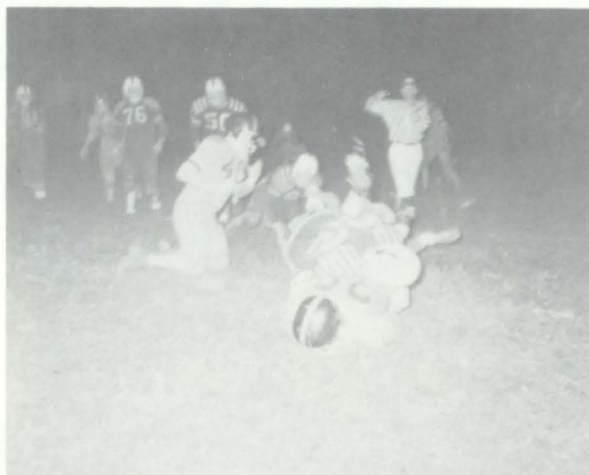
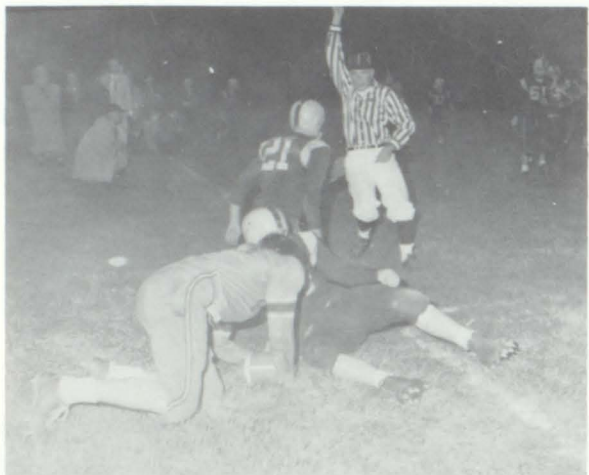
FIRST ROW: D. Bowker, D. Elmer, R. Loehr, J. Bond, T. Wilson, J. Hoffine, J. Everhardt, C. McGee. SECOND ROW: R. Dunston, E. Nelson, J. Young, F. Snow, D. Bosanko, G. Sedgwick, J. Fizell, F. Carter. THIRD ROW: B. Richardson, R. McClane, E. Crosby, E. Goble, W. McDonald, C. Brown.

# COACHING STAFF



FIRST ROW: Mr. W. Sigley, Mr. G. Cox, Mr. M. Bell. SECOND ROW: Mr. R. Burns, Mr. E. Gorsky.





# VARSITY BASKETBALL



LEFT TO RIGHT: B. Hilliard, H. Klamm, A. Knight, M. Woolf, G. Price, L. Cohan, K. Woolf, H. McConico, E. Lynn, J. Holloway. Coach Gorsky, E. Nyman-Manager.

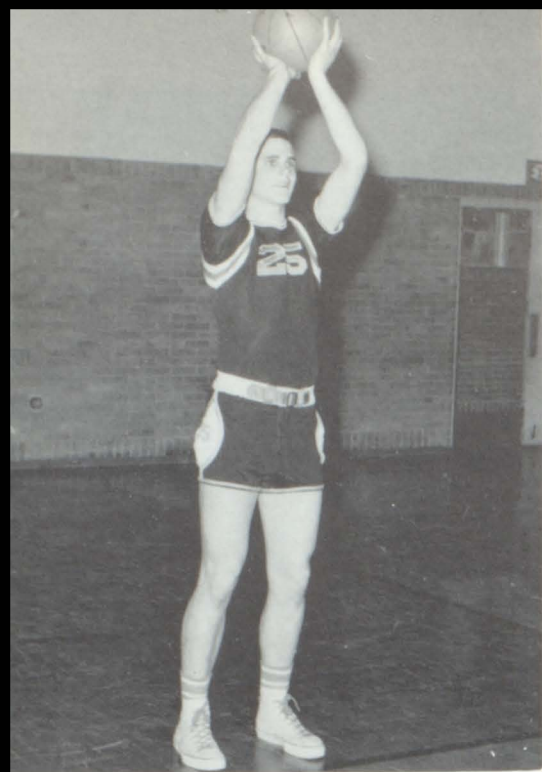
OPPONENTS	WE	THEY
SPRING HILL	56	37
MIEGE	58	55
ARGENTINE	31	57
BALDWIN	72	55
ST. JOSEPH	51	49
OLATHE	42	40
PAOLA*	58	68
ST. JOSEPH	52	39
OLATHE*	50	52
ROSEDALE*	55	63
OSAWATOMIE*	68	49
DE SOTO	80	59
TURNER*	64	55
PAOLA*	56	55
OLATHE*	58	57
ROSEDALE*	49	51
OSAWATOMIE	63	44
TURNER*	46	66

\* League Games

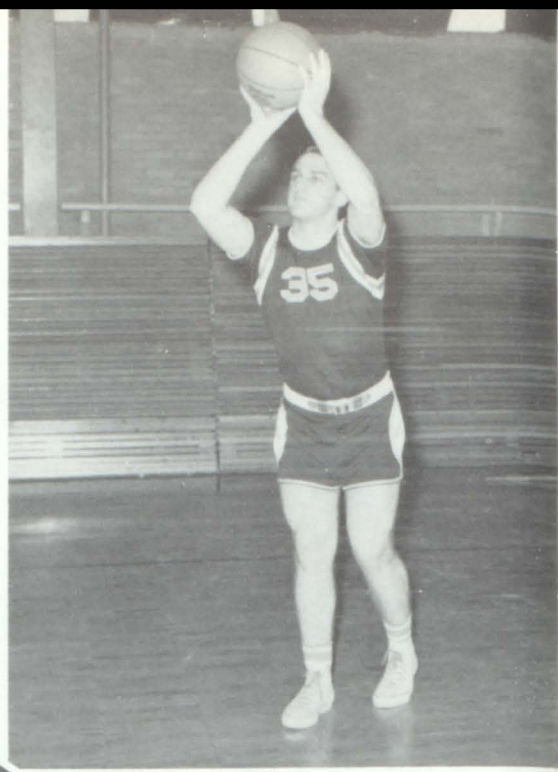
The Braves came up with a 13-6 won lost record for one of the best seasons in the history of the school. They had a 5-5 league record, good enough for a third place tie with Paola.

Larry Cohan, transfer student from Herington, Kansas and the top scorer in the Kansas City, Kansas area, led the team. Mike Woolf was the second top scorer, also serving as a dependable rebounder. Alvin Knight was well known for his long shots. Harold Klamm with his rebounding and Ed Lynn with his high percentage of free throws rounded out the starting line up. Bill Hilliard, John Holloway, Glenn Price, Kurt Woolf, and Herman McConico made up the reserve strength.

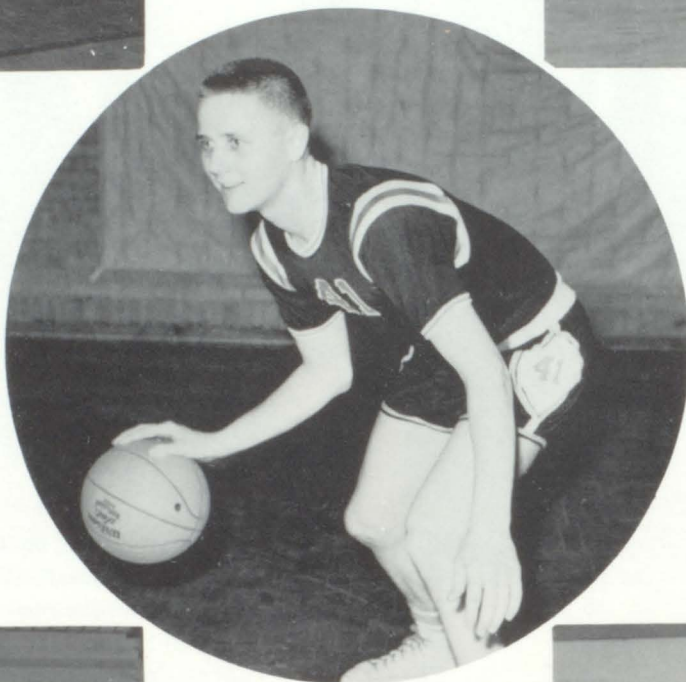
It was the last year of coaching for Mr. Gorsky, who announced his resignation from the coaching department at the beginning of the season. He will serve as guidance counselor of the school next year. It was the first year for Mr. Sigley, who handled the Freshman team. The B-team, coached by Mr. Cox, wound up with a 10-6 standing.



Larry Cohan



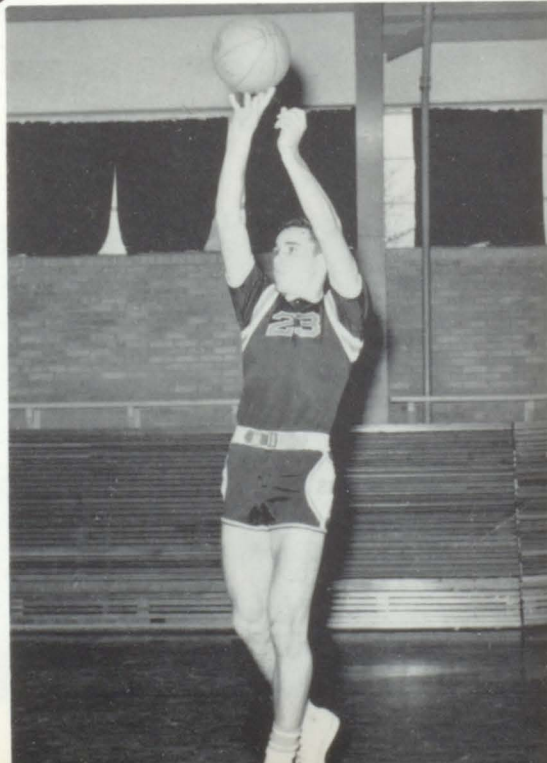
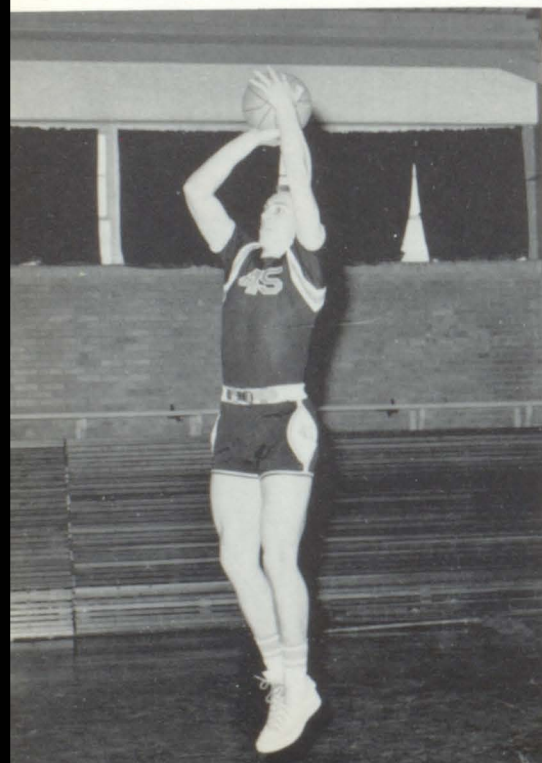
Al Knight

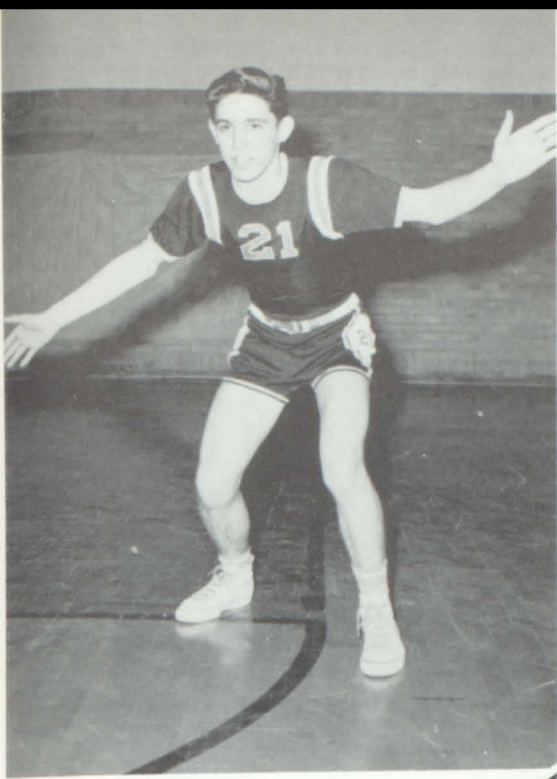


Mike Woolf

Harold Klamm

Ed Lynn





Bill Hilliard

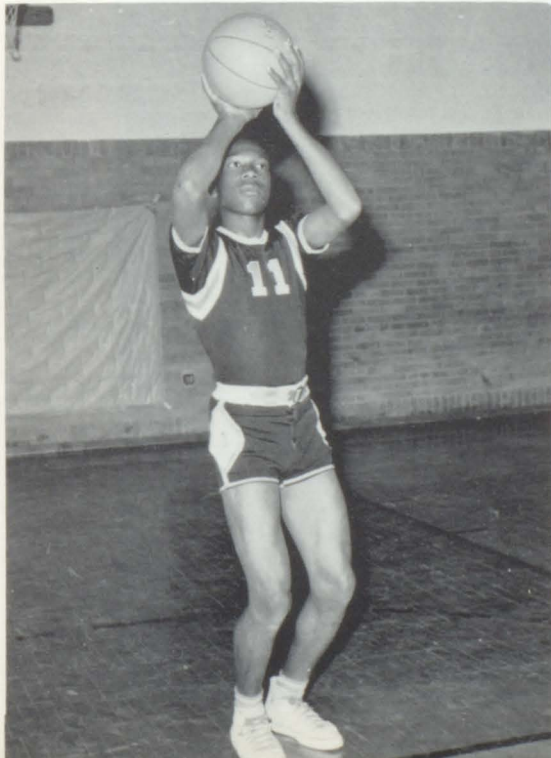


John Holloway



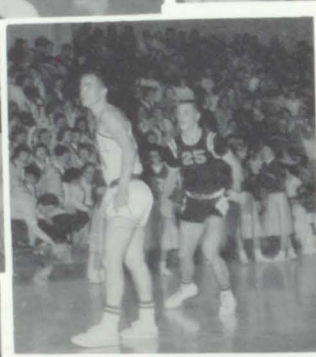
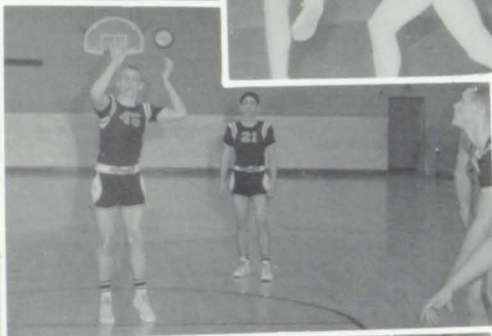
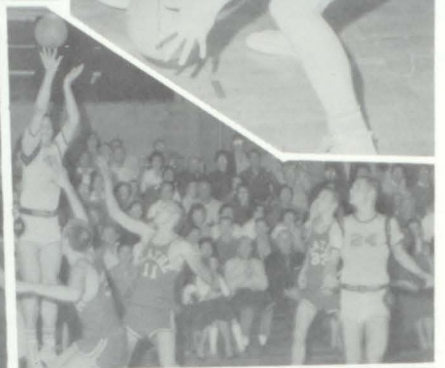
Herman McConico

Kurt Woolf



Glenn Price







# "B" TEAM BASKETBALL



LEFT TO RIGHT: J. Carson, S. Keen, J. Price, C. Shepherd, T. Caldwell, D. Hodges, C. Hale, J. Wright, L. Enloe, J. Nick, Coach Cox.

## SCORES

OPPONENTS	WE	THEY	OPPONENTS	WE	THEY
ARGENTINE	44	55	BALDWINE	64	14
PAOLA *	61	50	TURNER *	66	48
ST. JOSEPH	38	34	PAOLA *	51	45
OLATHE *	31	46	OLATHE *	53	50
ROSEDALE *	44	49	ROSEDALE *	39	41
OSAWATOMIE *	37	38	OSAWATOMIE *	39	42
DE SOTO	53	28	TURNER *	58	54

# FROSH BASKETBALL



FIRST ROW: B. Richardson, W. McDonald, C. McGee, D. Bowker, B. Branson, C. Brown.  
 SECOND ROW: Coach Sigley, R. Aldridge, D. Bosanko, D. Moore, F. Snow, J. Hoffine, F. Watson, B. Chamberlain.

## SCORES

WE	OPPONENTS	THEY
16	WASHINGTON	31
16	TURNER*	37
27	LEAVENWORTH	47
23	ST. JOSEPH	19
39	OSAWATOMIE	22
46	PAOLA*	19
51	OLATHE*	30
	IMMACULATA TOURNEY	
42	IMMACULATA	70
48	BENTON (ST. JOSEPH, MO.)	39
58	OSAWATOMIE*	34
43	ST. JOSEPH	30
25	TURNER*	23
14	ROSEDALE*	42
30	WASHINGTON	35
51	OLATHE	52
43	LEAVENWORTH	42

\* - League Games

Season Record: Won 9-Lost 7

League Record: Won 4-Lost 1

# VARSITY TRACK



FIRST ROW: J. Papineau, E. Nyman, S. Keen, W. McCaslin, D. Meinke, M. Woolf, H. Klamm, L. Cohan, J. Wright, R. Barney, B. Hilliard, J. Holloway. SECOND ROW: B. Richardson, C. Jackson, J. Everhardt, F. Snow, J. Meinke, A. Bolton, R. Hemphill, L. Enloe, K. Woolf, T. Huntley, C. Shepherd, R. Stedman, B. Aldridge. THIRD ROW: R. Lynn, C. McGee, H. McConico, J. Carson, D. Elmer, J. Henderson, K. Beach, J. Tomlin, R. Dunston, D. Warrenburg, B. Kuchenthal, P. Knight, P. Carl. FOURTH ROW: M. Mellott, W. McDonald, E. Crosby, R. Chamberlain, A. Johnson, D. Bowker, T. Wilson, J. Nick, D. Frey, M. Saunders, J. White, R. Loehr, D. Chambers, R. Kelly, E. Goble.

# CROSS COUNTRY



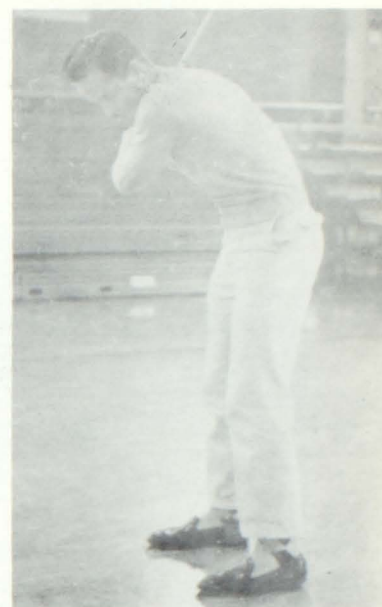
FIRST ROW: J. Papineau, M. Mellott, G. Hines, A. Johnson, R. Aldridge, Coach Bell. SECOND ROW: B. Le Row, T. Huntley, C. Shepherd, A. Bolton, R. Stedman, D. Chambers.



Glenn Price



Bob Branson



Charles Hale



Coach Gorsky

John Price



Dennis Bowker



Fred Watson







## ORGANIZATIONS

# PEP CLUB UPPERCLASSMEN



FIRST ROW: K. Einhellig, G. Layman, S. Lawrence, S. Wiley, SECOND ROW: I. Stoneking, R. Miller, G. Schofield, C. Kelly, K. Keen, L. Haueter, S. Jones, B. Wright, D. Mize, M. Moffit, Miss Thomason, Miss Conyers, THIRD ROW: J. Elmer, L. McDonald, S. Long, M. Sandburg, V. Gardner, M. Reynolds, S. Wilkerson, L. Klahr, S. Merritt, J. Papi-neau, S. Issitt, C. Copenbarger, G. Fishbaugh. FOURTH ROW: S.

Saunders, B. Scott, L. Lehman, B. Williams, C. March, M. Wright, M. Richardson, M. Wasson, S. Boyd, P. Orser, C. Chamberlain, C. Wendt, S. Bowker. FIFTH ROW: R. Wilkins, K. Beach, P. Langford, S. Hall, M. Helvern, J. Fogle, S. Kuhn, P. Finnigin, D. Espy, P. Jennings, D. Rader, M. Cooper, B. Pilger.

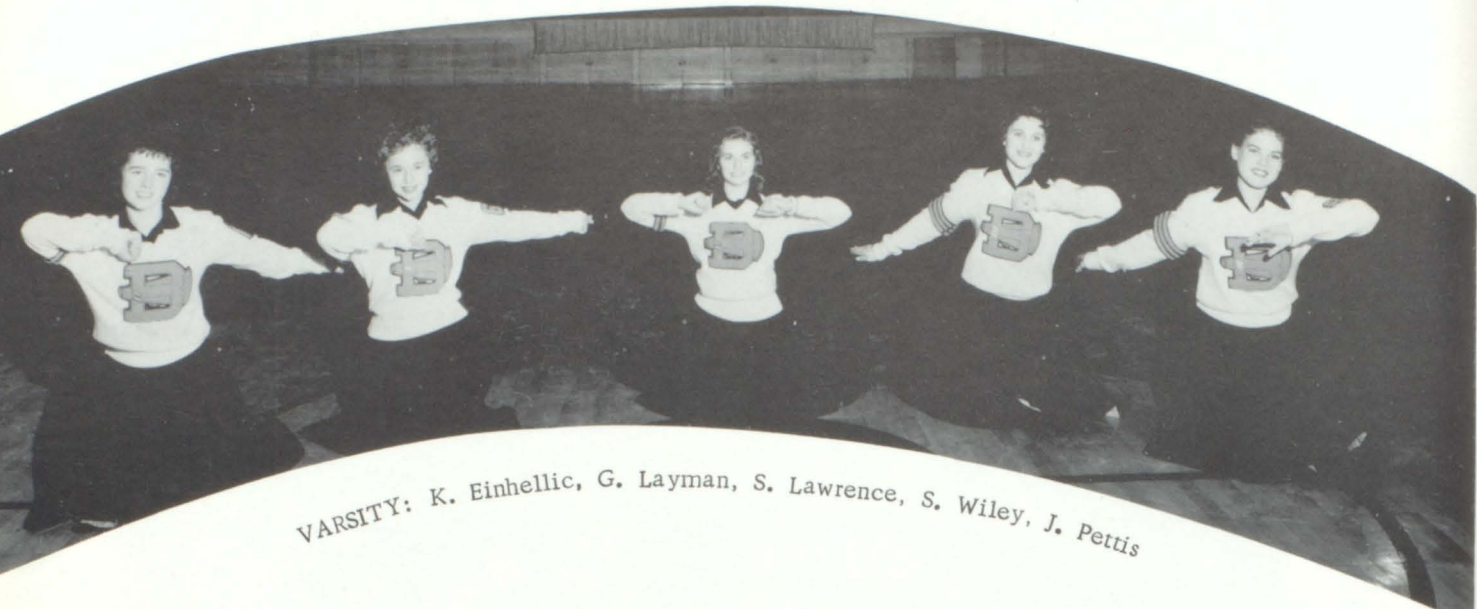
## PEP CLUB UNDERCLASSMEN



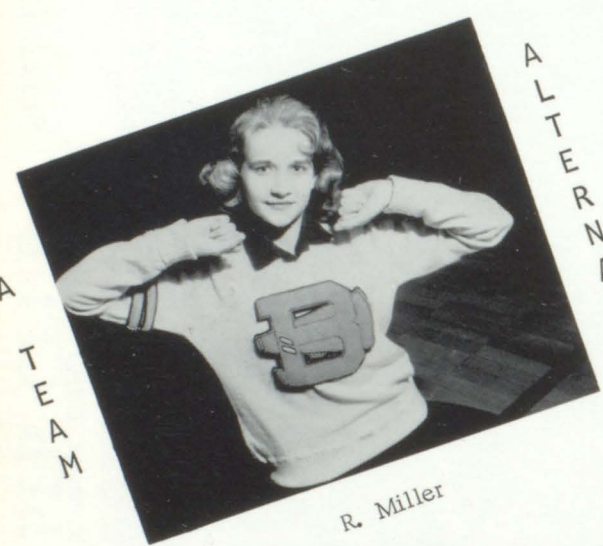
FIRST ROW: B. Papa, B. Reed, N. McMackin, Y. Hess, M. Miesse, L. Betancourt, E. Pollock, S. Chandley, Miss Mattix. SECOND ROW: K. Meredith, B. Sedgwick, C. Nash, M. Mellott, L. Kuchenthal, J. Hogan, G. Mize, M. Wendt, C. Roudybush, K. Shultz. THIRD ROW: S. Williams,

L. Allen, R. Langford, N. Gillham, P. Kelly, M. Kuhn, D. Roth, G. Pickett, A. Hylton, G. Neal. FOURTH ROW: M. Shultz, C. Stewart, D. Purtee, J. Roark, A. Bryant, S. Williams, B. Finnigin, J. Keeler.

# CHEERLEADERS



VARSIITY: K. Einhellic, G. Layman, S. Lawrence, S. Wiley, J. Pettis



A  
L  
T  
E  
R  
N  
A  
T  
E

R. Miller



B  
T  
E  
A  
M

A  
L  
T  
E  
R  
N  
A  
T  
E

C. Stewart



B - TEAM

- R. Langford
- M. Mellott
- S. Williams
- G. Mize
- K. Shultz



Darlene Espy, Queen of the Christmas Ball

PEP CLUB OFFICERS

President . . . . .	Karen Keen
Vice-President . . . . .	Lily Hauetter
Secretary . . . . .	Barbara Wright
Treasurer . . . . .	Sharon Jones
Sergeant-at-Arms . . . . .	Darline Mize



# BIBLE CLUB



FIRST ROW, Left to Right: Ineal Davenport, Georgia Grim, Evelyn Henderson, Karen Meredith, Carolyn Copenbarger, Shirley McCord, Lloyd Berrey, Cheryl Kelly, Mary Lou Reynolds, Dave Meinke, Marilyn McCaslin, George Johnson, Bob Butler, Beverly Huggins, Pat Beals, Betty Howard, Mr. Magnenat, Sponsor. SECOND ROW: Betty Phillips, Ethel Pollock, Narena McMackin, Lonetta McDonald, Mary Smith, Rachel Wilkins, Marilyn Harris, Margaret Fenton, Joan Vaughn, Pat Lewis, Evelyn Mitchell, Judy Hogan, Carolyn Jones, Pat Holley, Thelma Brese, Sharon Houseworth, Sandra Dunivan, Bill Harper, Rayma Dickson.

# MIXED CHORUS



FIRST ROW: L. Holt, S. Houseworth, M. Smith, L. Herrin, R. Brickey, C. Dale, S. Peoples, T. Williams, S. Jones, W. Davenport. SECOND ROW: M. Crosby, D. Crosby, M. Kuhn, D. Espy, N. Gillham, M. Harris, M. Hernandez, C. Foster, J. Jones, I. Davenport, C. March. THIRD ROW: J. Merriam, K. Beach, D. Hininger, J. Fealey, D. Frey, P. Savings, J. Meinke, D. Wareburg, T. Mitchell, G. Harris.

## GIRLS' GLEE CLUB



FIRST ROW: R. Dickson, G. Grim, S. McCord, J. Hicks, S. Merritt, S. Lawrence, E. Himmerling, B. Reed, E. Pollock. SECOND ROW: C. Jones, D. Savings, C. Nash, D. Crosby, K. Thomson, B. Ferguson, C. Roudybush, B. Scott, N. Mc Mackin, L. Anderson. THIRD ROW: M. Crosby, J. Keeler, G. Clark, N. Stacey, J. Thompson, B. Thompson, J. Roark, E. Fenton, S. Watkins, L. Herrin, F. Oliver.

## BOYS' GLEE CLUB



FIRST ROW: G. Tinder, G. Johnson, R. Chamberlain, M. Sauders, C. Hedden, D. Hininger, H. Brown, E. Crosby, C. Brown, R. Lynn, A. Johnson, B. Butler, B. Harper, B. Scott. SECOND ROW: L. Mc Washington, M. Green, M. Passler, S. Hulbert, J. Langford, J. Fealey, J. Davis, R. Stovall, J. Meinke, C. Jackson, W. Mc Donald, B. Branson, K. Roberts, G. Jardon. THIRD ROW: J. Brown, D. Mills, M. Davis, P. Savings, R. Barney, K. Curnutte, J. Papineau, D. Klahr, B. Sickman, D. Elmer, D. Warrenburg, R. Dunston, B. Hewitt, E. Goble, J. Sandburg. FOURTH ROW: S. Keen, A. Bolton, J. Tomlin, R. Enloe, K. Beach, D. Powell, C. Spring, D. Vickers, B. Tabor, G. Harris, M. Saunders, R. Loehr, T. Huntley, F. Watson, D. Chambers, R. Kellner.

# THE BAND



FRONT ROW, Left to Right: Mary Ann Meade, Larry Enloe, Dennis Chambers, Karen Meredith, Sharon Coleman, Bonnie Ferguson, Carlene Roudybush, Rayma Dickson, Wanda Jolliff, Marilyn Wright. SECOND ROW: Barbara West, Joann Leake, Linda Holt, Connie March, Mary Ann Miesse, Barbara Wright, John Papineau, Sheryl Peoples, Sharon Eastwood, Sam Keen, Sharon Bowker, Carol Wendt. THIRD ROW: Karen Keen, Lloyd Berrey, Roger Barney, Ricky Tinberg, Keith Roberts, Marvin Sowders, George Trickett, Herman McConico, David

Warnberg, Chuck Brown, Butch Aldrich, Pam Puntteney, Bob Branson, Lavonne Klahr, Tom Anderson, Gary Jardon, Barbara Scott. FOURTH ROW: Peter Savings, Bob Cline, Mr. Ferguson, Director, Jeannine Papineau, Sharon Merritt, Dalene Espy, Jerry Young, Bob Butler, Susan Saunders, Sharon Lawrence, Shelia Kempfer, Arthur Bolton, Dorothy Purtee, Janice Fogle, Charlotte Chamberlain, Sharon Hall.



TWIRLERS: Charlotte Chamberlain, Dorothy Purtee, Janice Fogle, Sharon Hall.



Drum Major, Barbara Scott



BELL AND FLAG CARRIERS: Sharon Lawrence, Sharon Merritt, Mary Ann Miesse, Carlene Roudybush, Darlene Espy.

# SODALITAS LATINA



FIRST ROW: L. Holt, S. Coleman, C. Copenbarger, L. Betancourt, S. Chanley, G. Hines, B. Butler, G. Jardon, J. Lindsay, M. Moffit, Mrs. Stith. SECOND ROW: B. Sandburg, Georgia Neal, M. Miesse, D. Roth, G. Layman, B. Scott, R. Sours, B. Bond, M. Shultz, S. Issitt, G. Fishbaugh, J. Merriam, A. Johnson, THIRD ROW: L. Allen, J. Pickett, J. Barnard, R. Tinburg, D. Bosanko, A. Bryant, P. Kelly, T. Travis, S. Saunders, S. Jones, B. Pilger, B. Ferguson, C. Wendt. FOURTH ROW: H. Hundley, J. Papineau, T. Mitchell, T. Huntley, D. Frey, G. Price, D. Powell, J. Tomlin, L. Berry, F. Swenton, R. Kellner, M. Metzler, C. Watkins.

# FRENCH CLUB



FIRST ROW: D. Mize, S. Long, L. Lehman, D. Wolfrom, J. Jenkins, F. Oliver, P. Orser, Miss Lee. SECOND ROW: L. Anderson, B. Scott, C. Wendt, S. Bowker, L. Klahr, I. Stoneking, M. Wendt, C. Jones, Dunivan. THIRD ROW: S. Kuhn, J. Fogle, D. Powell, R. Dotson, H. Jones, M. Kuhn, E. Nyman, C. Cannon, P. Nuesse, S. Houseworth.

# KAYETTE CABINET



Back row and around the table: Marcia Wendt, Carol Wendt, Annora Bryant, Juanita Pickett, Sue Saunders, Sally Wilkerson, Myrner Wagner, Pat Nuesse, Sylvia Issitt, Judy Pettis, Carol Watkins, Sunny Williams, Torie Travis, Sharon Merritt, Barbara Scott, Glenna Layman, Rayma Dickson.



Kayette Christmas Play Cast



Kayette Representatives  
to Conference

# SENIOR KAYETTS



FIRST ROW: S. Coleman, C. Kelly, S. Merritt, C. Jones, P. Nuesse, T. Ford, S. Saunders, K. Keen, M. Meade, G. Schofield. SECOND ROW: L. Klahr, P. Deay, D. Connor, S. Lawrence, P. Jennings, B. Wright,

B. Scott, S. Wilkerson, C. Wendt, J. Hubbard, D. Mize. THIR ROW: S. Bowker, P. Garstecki, J. Rehm, T. Travis, C. Watkins, P. Finnigin, J. Fogle, D. Moss, P. Langford, J. Barnard, J. Pickett, M. Wagner.

# UNDERCLASSMAN KAYETTS



FIRST ROW: R. Dickson, G. Grim, M. Moffit, M. Miesse, G. Neal, K. Thomson, D. Roth, L. Allen, C. Roudybush, B. Ferguson, M. Mellott, M. Shultz, P. Lewis, C. DeMaranville, R. Miller, J. Lindsay, S. Chanley, Miss Mattix. SECOND ROW: G. Fishbaugh, B. Reed, B. Sandburg, S. Long, L. Lehman, M. Wright, G. Layman, L. Hauetter, M. Sandburgh, J. Elmer, B. Williams, I. Stoneking, S. Watkins, L. Herrin, R. Langford, P. Holley, B. Mansfield, L. Betancourt. THIRD ROW:

Shultz, B. Finnigin, R. Sours, R. McAnerney, C. March, M. Richardson, S. Wiley, S. Boyd, B. Pinkepank, J. Papineau, S. Jones, K. Beach, S. Hall, P. Orser, S. Yount, J. Pettis, M. Wendt, B. Pilger. FOURTH ROW: S. Issitt, L. McDowell, K. Burnam, D. Espy, A. Bryant, S. Kuhn, D. Purtee, C. Stewart, A. Knight, J. Roark, S. Kempfer, P. Puntenny, S. Williams, B. Thomson, J. Jenkins, M. Wasson, P. Kelly, M. Kuhn, D. Rader.

# SAFETY CLUB



FIRST ROW: Mr. Hilbert, Pat Deay, S. Merritt, G. Schofield, I. Stoneking, M. Sandburg, K. Shultz, J. Elmer, Mr. Hunsley. SECOND ROW: M. Richardson, P. Nuesse, J. Hubbard, S. Wiley, S. Boyd, S. Jones, M. Wagner, L. Hauetter. THIRD ROW: P. Garstecki, K. Beach, M. Wright, R. Dunston, M. Wasson, C. Roudybush, T. Travis, S. Saunders, S. Lawrence, P. Jennings. FOURTH ROW: D. Espy, R. Kellner, J. Tomlin, D. Powell, K. Beach, J. Sandburg, C. Shepherd, L. Gebhardt, J. Rehm, D. Moss.

## SAFETY CLUB OFFICERS



FIRST ROW: G. Schofield, K. Beach, R. Dunston, L. Hauetter, S. Lawrence. SECOND ROW: J. Elmer, P. Garstecki, K. Shultz.

# SPANISH CLUB I



FIRST ROW: B. Howard, R. Langford, R. Miller, D. Rader, B. Pinkepank, M. Wright, L. Forester, K. Woolf, D. Klahr, S. Baker, G. Fishbaugh, M. McCaslin, J. Leake, Miss Lee. SECOND ROW: N. McMackin, Y. Hess, M. Fenton, K. Shultz, G. Pickett, C. Williams, J. Keeler, C. Nash. THIRD ROW: S. Keen, E. Nyman, G. Murray, G. Cunningham, R. Enloe, L. Arnett, D. Mills, J. Sandburg, A. Knight, D. Bowker, C. Isabell, M. Edwards, M. Green, B. Harper.

# SPANISH CLUB II



FIRST ROW: M. Sandburg, M. Moffit, L. Huetter, L. Cohan, S. Jones, R. Wilkins, J. Papineau, Miss Lee. SECOND ROW: J. Rehm, V. Ford, T. Ford, S. Boyd, S. Wiley, M. Wagner, K. Thomson, B. Sedgwick, J. Elmer. THIRD ROW: B. Thomson, J. Davis, J. Price, J. Wright, B. Sedgwick, C. Stewart, M. Richardson, K. Beach, J. Fogle, S. Williams, T. Travis.

# HI-Y



FIRST ROW: M. Metzler, J. Papineau, G. Pollock, J. Davis, C. Shepherd, L. Gebhardt, R. Kellner. SECOND ROW: T. Huntley, T. Wasson, P. Carl, W. McCaslin, H. Hundley, T. Chamberlain, J. Price. THIRD ROW: T. Mitchell, B. Sedgwick, C. Hale, R. Enloe, K. Beach, J. Tomlin, L. Berrey, L. Monks.



## OFFICERS

Vice President-Harvey Hundley  
President-Bill Sedgwick  
Secretary-Treasurer-Timmie Mitchell  
Sergeant-at-Arms-Ray Enloe  
Chaplain-Lloyd Berrey

The Purpose of the Hi-Y is to create, maintain and extend throughout the school and community high standards of Christian Character.



# STUDENT COUNCIL



FIRST ROW: D. Mize, M. Meade, M. Miesse, L. Betancourt, B. Mansfield, J. Pettis, L. Lehman, E. Fenton, D. Mize, E. Goble, J. Meinke, D. Bowker, M. Metzler. SECOND ROW: H. Dotson, L. Forester, T. Huntley, Mr. Gorsky, B. Hilliard, D. Frey, D. Meinke.

## STUDENT COUNCIL OFFICERS

The purpose of the Student Council is to aid the school and help carry out community projects through the students. Homecoming was one of the big events of the year when Stuco sponsored the annual homecoming dance.

Starting this year the Student Council members set up a table for selling supplies to the students during noon and before school.

The Student Council has been under the guidance of E.A. Gorsky.



- |                          |                |
|--------------------------|----------------|
| Mike Metzler . . . . .   | Treasurer      |
| Linda Lehman . . . . .   | Vice-President |
| Mary Ann Meade . . . . . | Secretary      |
| Harrell Dotson . . . . . | President      |



Mike Woolf, President; Alvin Knight, Secretary-Treasurer; Harold Klamm, Vice President.

## B-CLUB OFFICERS

## B-CLUB



FIRST ROW: T. Chamberlain, W. McCaslin, D. Meinke, M. Woolf, H. Klamm, A. Knight, L. Delana, G. Price, R. Goble, B. Hilliard. SECOND ROW: R. Pruitt, L. Monks, E. Nyman, R. Enloe, B. LeRow, L. Cohan, J. Wright, J. Feleay, J. Holloway, R. Barney. THIRD ROW: R. Aldridge, B. Cannon, J. Papineau, S. Keen, K. Woolf,

T. Huntley, C. Shepherd, D. Hodges, J. Hylton, R. Stedman. FOURTH ROW: Coach Cox-Sponsor, H. Me Conico, E. Lynn, J. Meinke, K. Beach, B. Tabor, D. Vickers, H. Hundley, J. Cannon.

# F. H. A.



FIRST ROW: K. Meredith, R. Dickson, G. Layman, M. Smith, C. Watkins, P. Jennings, S. Lawrence, C. Roudybush, S. Merritt. SECOND ROW: D. Demmings, W. Davenport, P. Boals, M. Meade, Y. Hess, B. Sandburg, J. Hogan, B. Papa, B. Reed, Miss Conyers. THIRD ROW: M. McCaslin, N. McMackin, L. Kuchenthal, S. Dunivan, G. Mize, D. Connor, L. Lehman, R. McAnerny, L. Hauetter, K. Shultz, Mrs. Gray. FOURTH ROW: L. Herrin, E. Mann, S. Kempfor, C. Stewart, A. Knight, B. Penrod, K. Burnam, G. Clark, K. Beach, S. Dale.



FIRST ROW: M. Smith, C. Watkins, P. Jennings, G. Layman, S. Merritt.  
SECOND ROW: R. Dickson, C. Roudybush, S. Lawrence, C. Stewart.

F.H.A. is a national organization created to promote a growing appreciation of the joys and satisfactions of homemaking.

The Future Homemakers also emphasize the importance of worthy home and community life.

# THE POW WOW STAFF



Sharon Bowker, Annora Bryant, Harrell Dotson, John Carson, Mike Metzler, Sara Kuhn, Susan Saunders, Gail Fishbaugh, Glenn Price, Mary Ann Richardson, Mrs. Stith and Sharon Coleman.

# POW WOW PRODUCTION STAFF



Mary Ann Meade, Pat Jennings, Gerrie Schofield, Bill LeRow, Karen Einhellig, Darling Connor, Mary Lou Reynolds, Darline Mize, Charlotte Chamberlain, Phylis Garstecki, Mrs. Middaugh, Susan Saunders, Sally Wilkerson, and Karen Keen.

# THESPIANS



FRONT ROW: Linda Holt, Sharon Lawrence. BACK ROW: Mr. Veach, Sponsor; Sharon Coleman, Pat Jennings, Barbara Scott, Karen Shultz, Rudy Kellner.

Thespians is a national high school society for the advancement of the dramatic arts. Students earn their membership by working on various plays, programs, and participating in speech contests. Ten points are necessary for membership with each point equivalent to approximately ten hours of work on some phase of the speech and dramatics program.



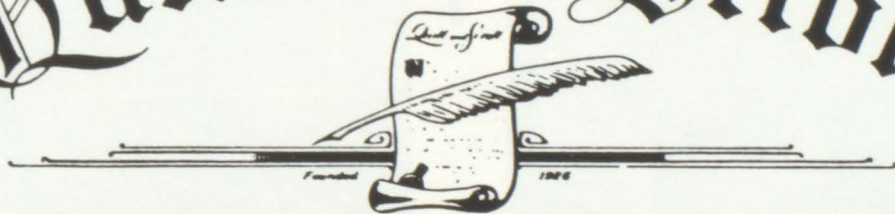
Vice President, Rudy Kellner; Secretary, Sharon Merritt; President, Sharon Lawrence.

# QUILL AND SCROLL



FIRST ROW, Left to Right: Sharon Coleman, Sharon Bowker, Sara Kuhn, Sue Saunders. SECOND ROW: John Carson, Glenn Price, Mike Metzler, Harrell Dotson.

## Quill and Scroll



International Honorary Society for High School Journalists



BACK ROW: Carol Wendt, Harrell Dotson, Bill Sedgwick, Dave Meinke, Harvey Hundley, Karen Keen. FRONT ROW: Peggy Langford, Sharon Merritt, Sharon Coleman, Barbara Scott, Sharon Bowker, Barbara Wright.

# THE NATIONAL HONOR SOCIETY



THE SALUTATORIAN



Barbara Scott

THE VALEDICTORIAN



Sharon Coleman



## AFTER HOURS





## HOMECOMING QUEEN

NETA GILHAM, Sophomore



Linda Lehman, Junior Class



Carol Wendt, Senior Class



Susan Chandley, Freshman Class



Barbara Wright, B-Club



Karen Keen, Pep Club



Barbara Scott and Sharon Coleman



Sharon Lawrence and Sandy Boyd



Kathy Beach



Linda Holt and Pat Jennings



Lily Hauetter and Karen Shultz



DISTRICT SPEAKERS--SECOND ROW, Left to Right: S. Lawrence, K. Shultz, J. Pettis, S. Coleman, L. Holt. FIRST ROW: R. Kellner, S. Williams, C. March, S. Saunders, Mr. Veach.

# COOKS AND CUSTODIANS



## BONNER BOOSTERS

Blair's Garage

Burdett's Jewelry

Doc Stith

Sallee Motor Service

Burnam Plumbing

Ruby's Liquor Store

Doc Miller

Stafford's Market

Luther's Barber Shop

Gibson's Barber Shop

Doc H. R. Williams

Grohs Cafe

COLEMAN IMPLEMENT COMPANY

J. I. Case and  
Minneapolis, Moline  
Farm Machinery  
Frigidaire Appliances  
GMC Trucks  
Parts and Service

Telephone 243  
Bonner Springs

Best Wishes

to the

students of

Bonner Springs, Rural High

**BONNER SPRINGS  
COUNCIL OF CLUBS**

Dedicated to

Youth  
Activities  
Truth

Faith  
Spirit  
Entertainment

A coordinated group of  
Individuals, Civic and  
Service Clubs

Compliments to

Senior Class of 1960

RUBY LAUNDRY AND  
CLEANERS

Free pick-up and delivery  
107 Oak Phone 234

**ED ROBERTS**

**CHEVROLET COMPANY**



New and Used Cars and Trucks

Parts and Service

Hamilton 2-1000

112 Oak Street

Bonner Springs

Kansas

Congratulations

Class '60

H. G. ABBOTT

Steel Fabrication

Since 1909

EDWARDSVILLE STATE BANK

Member of

Federal Deposit Insurance  
Corporation

Compliments to  
the Class of '60  
LONE STAR CEMENT CORPORATION

Portland Cement  
Manufacturers

Phone 92



Compliments of

## McHENRY'S GROCERY

511 North Nettleton

Phone 231

Bonner Springs

Kansas



Congratulations

Class of 1960

## HARTEGAN GROCERY

Edwardsville, Kansas

Phone 505

Lockers

KEMLER AUTO PARTS

204 East Second

Phone 445

Bonner Springs

Kansas

Compliments of  
ALDEN HARRINGTON & SONS

Funeral Home

214 Oak Street

Bonner Springs, Kansas

BAUMGARTNER PHOTO SERVICE

Portraits, Cameras

Film Developing  
and  
Film Satisfaction

Guaranteed

# H.C. DAVIS SON'S

MANUFACTURING  
COMPANY

Box 185  
Bonner Springs Kansas

Quality Machinery  
Manufacturers  
Since 1894



Don't Bowl Serious

Bowl for Fun

**K-32**

**BOWL**

Phone 476  
Edwardsville Kansas

# ROUDYBUSH SERVICE STATION



## FREY AUTO SALES

Complete Body Service

Factory-Trained Men

Genuine Ford Parts

Cars and Trucks

228 Oak Street Phone 245



## FEDERATED STORE

123 Oak Street



Congratulations to Class of  
"60"

## THE OWL HARDWARE CO.

Phone 28

226 Oak

Compliments  
of

## TINDER'S MARKET

322 North Nettleton

Phone 1129

"The Little Big Store"



## DEE'S SERVICE STATION

Mobilgas, tires, tubes, and  
batteries

Road



Service

111 Front Street

Phone 182

Compliments to

Senior Class of 1960

from

BONNER SPRINGS CHIEFTAIN

116½ Oak

Phones 49 & 94


BEST WISHES TO ALL

# DUSIL- MELLOTT-STUBBS INSURANCE AGENCY

INSURANCE OF EVERY TYPE

REPRESENTING SEVEN COMPANIES TO OFFER  
THE BEST OF INSURANCE FOR EVERY NEED

Indiana Lumbermens Mutual of Indianapolis, Ind.  
The Home Insurance & Indemnity Co., New York  
The Standard Accident Ins. Co., Detroit, Mich.  
The Equity Mutual Ins. Co., Kansas City, Mo.  
The Bremen Farmers Mutual Ins. Co., Bremen, Kans.  
The Hartford Steam Boiler & Inspec. Co., Hartford,  
Conn.  
The American Home Life Ins. Co., Topeka, Kansas



Tony Dusil  
Manager

Tony Dusil - Tony Mellott - John Stubbs Members "Orange tops"

Office Staff  
Mrs. Tony (Mary) Dusil  
Sandy Long

127 Oak Street  
(Thru Mary's Gift Shop)  
Phone 164 Day or Night



## THE DARI-DINE

Kump and Nettleton  
Bonner Springs, Kansas

Compliments

of

REYNOLD'S

BODY SHOP

Phone 24

Edwardsville

Kansas

Compliments of

JOHNSON'S EVERYTHING STORE

125 Oak Street

Bonner Springs, Kansas



Compliments  
of  
**BONNER SPRINGS  
COMMERCIAL  
STATE BANK**

Member F.D.I.C.

Your Hometown Independent Bank

Phone 13

201 Oak



**BREWER'S FOOD FEST**

All national brands  
Complete line of frozen foods  
Fresh meats and vegetables

Newest and most modern store  
in Kansas

605 East Front Street  
Bonner Springs, Kansas

Compliments  
of  
**APOLLO CLEANERS**

Pick up and delivery

112 Oak

Phone 181

**WRIGHT'S SKELLY SERVICE**

101 Oak

Phone 449

Bonner Springs, Kansas



## BILL HUGHES

Front and Cedar Street

Jct. #7 and #32

Phone 465

P.O. Box 42  
Bonner Springs, Kansas

## THE HOME INSURANCE AGENCY

Glenn R. Barb, Agent

Insurance of All Kinds

Phone 60

Bonner Springs, Kansas



## ELMER'S TV SALES AND SERVICE

Motorola, Philco, Zenith  
Factory Service

Shop Service and House Calls

127 Oak Street  
Phone 836

BONNER SPRINGS, L P GAS

218 Oak Street

Phone 706

Bottled Gas, Heaters, and  
Ranges

Always

A Good Show

at the

RIO



Good Luck to the Class of '60

For the best

Eat and rest

at

**LONG'S**

611 Front Street  
Bonner Springs Kansas

## LUMBER COMPANY



Compliments

of

**FRANK'S BAIT SHOP**

Where all "Sports" meet

501 Front

Bonner Springs Kansas

SCOTT GOBLE SERVICE

Phone 487

111 East Third

Bonner Springs Kansas

IRIS BUY WAY

Groceries-Meats-Vegetables

Frozen Food Lockers

Phone 82

Bonner Springs Kansas

Compliments of  
**STEPHAN AND ALDRIDGE STANDARD SERVICE**

601 E. Front Street Phone 446



You EXPECT More From

And You GET It!

---

**COMPLIMENTS OF VALLEY FEED AND SUPPLY CO.**

Bonner Springs 196

---

**JONES I G A FOOD**

Always a Booster

The store with a smile



Phone 165

203 Oak

BONNER SPRINGS

READY MIX CONCRETE

Concrete  
Pre-Cast Septic Tanks

Ernie Bjorgaard Phone 804

---

Compliments

of

A. D. ROUDYBUSH

Heating and Air Conditioning

Phone 106

108 E. 2nd

Bonner Springs, Kansas

# KRISPY CAFE

204 Oak

Bonner Springs

Congratulations Class of 1960



Finest Food and Service  
We Cater All Kinds of Private Parties  
Phone 496



## WATSON BROTHERS

A. F. Watson, Owner

Friendly Service Drug Store

Prescriptions Accurately  
Filled

Phone 105

Bonner Springs

Kansas

MC CLAIN AUTO SUPPLY

formerly  
Marshall Auto Store

115 Oak Street  
Bonner Springs, Kansas

Compliments to Class of 1960

ATTEND

CHURCH

THIS

SUNDAY



Compliments  
of

**WHITE'S**

with

Best Wishes for the Future

to

Class of 1960

For All Your Insurance Needs

HULBURD INSURANCE AGENCY

113 South Nettleton  
Box 114 Phone 152

Evelyn N. G. Hulburd

Bonner Springs Kansas

Best Wishes to the  
Class of '60

BUNDY'S BARBER SHOP

303 Oak

Bonner Springs Kansas

WESTERN AUTO ASSOCIATE STORE

202 Oak Phone 546

Congratulations for your  
efforts, and much success in  
your future endeavors.

Frank Loehr



Compliments

to the

Class of 1960

**BEN FRANKLIN STORES**

Don Coffman, Manager

Phone 40 129-133 Oak

MIZE'S CONOCO SERVICE

B. F. Goodrich Tires  
and  
Batteries

Road Service

Phone 493

Bonner Springs Kansas

Compliments  
of  
MARY'S GIFT SHOP

127 Oak  
Bonner Springs, Kansas

Phone 164



BONNER SPRINGS  
BUILDING AND LOAN ASSOCIATION

You can start Small  
But start Now!

Open a savings Account here  
today.

Box 186  
Bonner Springs Kansas

Compliments of  
MODERN CRAFTSMEN

222 Oak Street

Phone 232

Bonner Springs

Kansas

PAINT AND WALLPAPER

Seidlitz, Sherwin-Williams,  
Temperia, Wallcrest, and  
Birge paints

Phone 354

119 Oak

Bonner Springs Kansas

JACKSON "66" SERVICE STATION



Phone 287

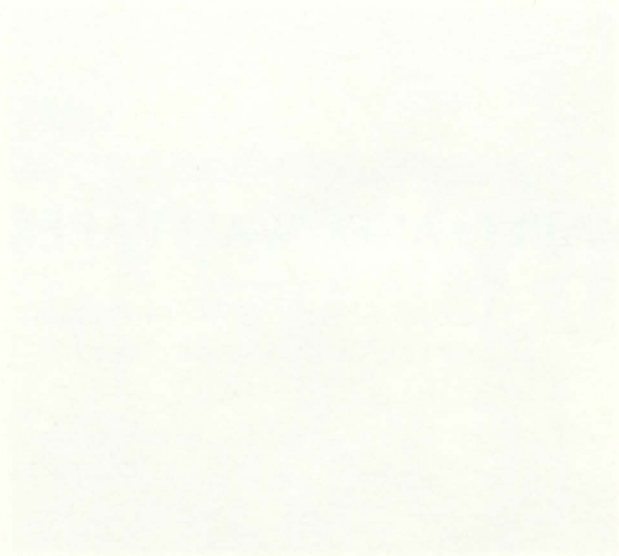
Edwardsville

Kansas

Shop at  
STU'S MARKET  
Groceries and Meats

Santa Fe Depot and  
Loring Drive

# AUTOGRAPHS



BEN FRANKLIN STORES

# AUTOGRAPHS

# AUTOGRAPHS



INTER-COLLEGIATE PRESS

Publishers — Manufacturers

Yearbooks — Yearbook Covers

Diplomas — Graduation Announcements

Factory — Home Office

Kansas City, Mo.

U.S.A.

